

WAAS CH 99324 W06A	APP CRS 061°	Rwy Idg TDZE Apt Elev	5501 1084 1084
--	------------------------	-----------------------------	---

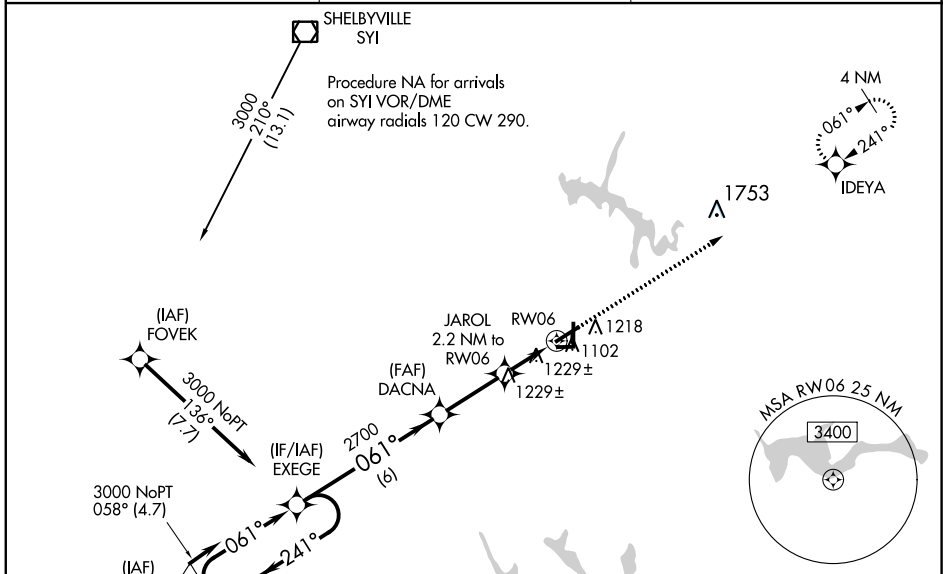
RNAV (GPS) RWY 6

TULLAHOMA RGNL/WM NORTHERN FIELD (THA)

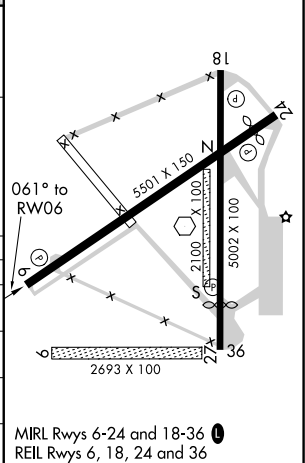
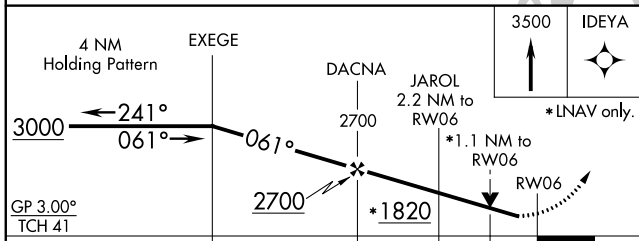
NA Baro-VNAV NA when using Nashville Intl altimeter setting. For uncompensated Baro-VNAV systems, LNAV/VNAV NA below -17°C (2°F) or above 37°C (98°F). DME/DME RNP-0.3 NA. Helicopter visibility reduction below 3/4 SM NA. VDP NA with Nashville Intl altimeter setting. When local altimeter setting not received, use Nashville Intl altimeter setting and increase all DA 182 feet and MDA 200 feet, increase LPV and LNAV/VNAV all Cats and LNAV Cat C and D visibility 3/8 mile, increase Circling Cat C visibility 1/4 mile and increase Circling Cat D visibility 1/2 mile.

MISSED APPROACH:
Climb to 3500 direct IDEYA and hold.

AWOS-3 128.325	MEMPHIS CENTER 128.15 323.125	UNICOM 123.0 (CTAF)
--------------------------	---	-------------------------------



ELEV 1084	TDZE 1084
-----------	-----------



CATEGORY	A	B	C	D
LPV DA		1334-7/8	250 (300-7/8)	
LNAV/VNAV DA		1390-1	306 (400-1)	
LNAV MDA	1480-1	396 (400-1)	1480-1 1/8	396 (400-1 1/8)
CIRCLING	1540-1	456 (500-1)	1540-1 1/2 456 (500-1 1/2)	1640-2 556 (600-2)

MIRL Rwy 6-24 and 18-36
 REIL Rwy 6, 18, 24 and 36

SE-1, 01 FEB 2018 to 01 MAR 2018

SE-1, 01 FEB 2018 to 01 MAR 2018