

NDB ULH	APP CRS	Rwy Idg	<b>5002</b>
<b>332</b>	<b>184°</b>	TDZE	<b>1082</b>
		Apt Elev	<b>1084</b>

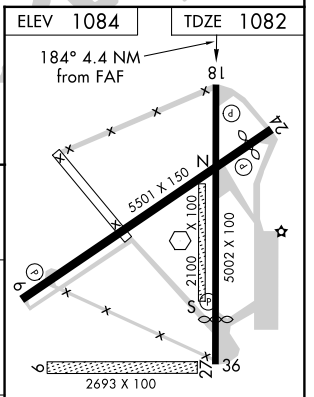
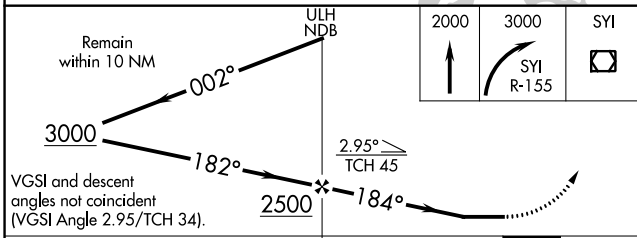
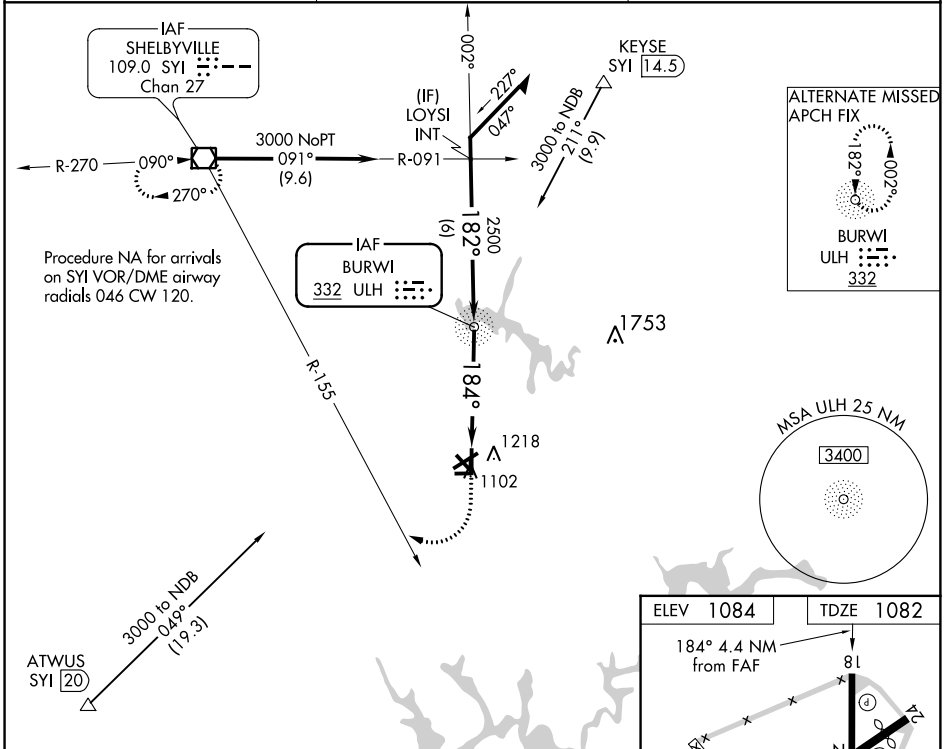
# NDB RWY 18

TULLAHOMA RGNL/WM NORTHERN FIELD (THA)

**NA** Helicopter visibility reduction below 3/4 SM NA. When local altimeter setting not received, use Nashville Intl altimeter setting and increase all MDA 200 feet, increase S-18 Cat C and D visibility and Circling Cat C and D visibility 1/2 mile.

**MISSED APPROACH:** Climb to 2000 then climbing right turn to 3000 via SY1 R-155 to SY1 VOR/DME and hold.

<b>AWOS-3</b> <b>128.325</b>	<b>MEMPHIS CENTER</b> <b>128.15 323.125</b>	<b>UNICOM</b> <b>123.0 (CTAF)</b>
---------------------------------	--	--------------------------------------



CATEGORY	A		B		C		D	
	S-18	1620-1	538 (600-1)	1620-1 1/2	538 (600-1 1/2)	1620-1 1/2	536 (600-1 1/2)	1640-2
CIRCLING	1620-1	536 (600-1)	1620-1 1/2	536 (600-1 1/2)	1620-1 1/2	536 (600-1 1/2)	1640-2	556 (600-2)

MIRL Rwy 6-24 and 18-36		REIL Rwy 6, 18, 24 and 36			
FAF to MAP 4.4 NM					
Knots	60	90	120	150	180
Min:Sec	4:24	2:56	2:12	1:46	1:28

SE-1, 01 FEB 2018 to 01 MAR 2018

SE-1, 01 FEB 2018 to 01 MAR 2018