

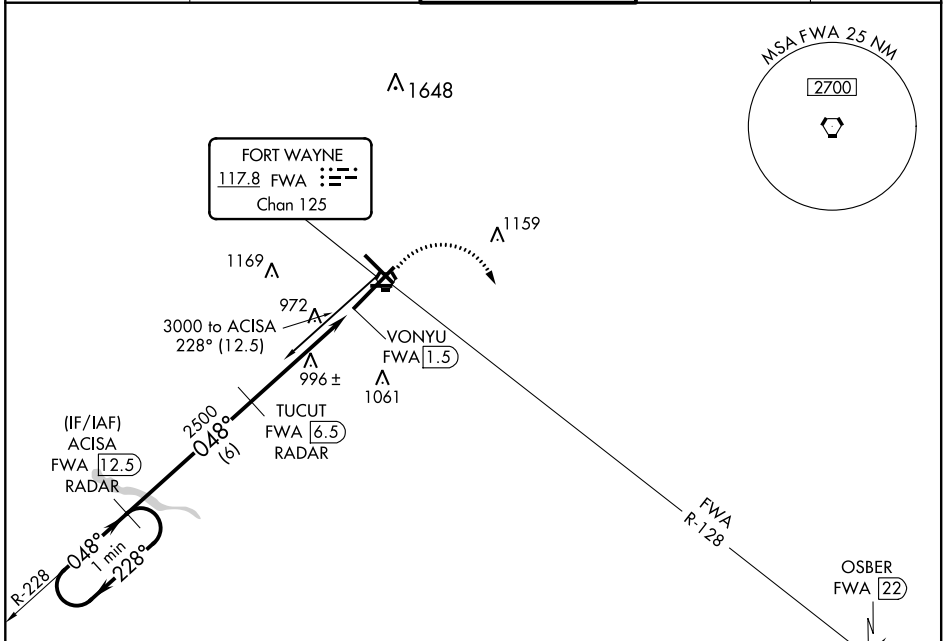
VORTAC FWA <b>117.8</b> Chan <b>125</b>	APP CRS <b>048°</b>	Rwy Idg TDZE <b>814</b> Apt Elev <b>814</b>
---	------------------------	---

# VOR or TACAN RWY 5

FORT WAYNE INTL (FWA)

ALSF-2 ASR	For Inoperative ALSF-2, increase S-5 Cat E visibility 1/2 mile. DME or RADAR Required.	MISSED APPROACH: Climbing right turn to 3000 via FWA VORTAC R-128 to OSBER INT/FWA 22 DME and hold.
---------------	---	---

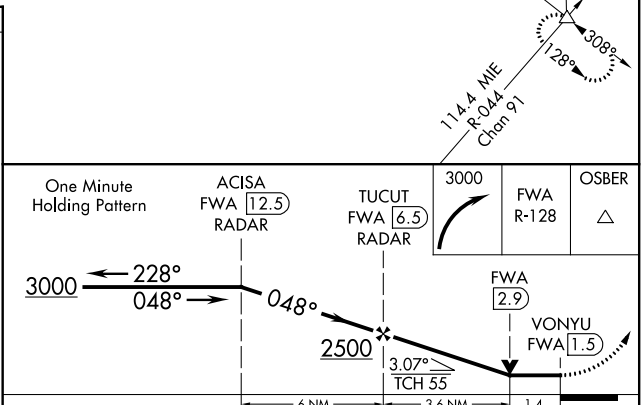
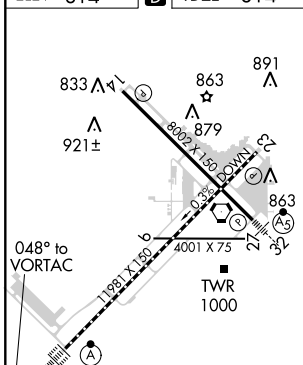
ATIS <b>121.25 360.825</b>	FORT WAYNE APP CON <b>127.2 284.6</b>	FORT WAYNE TOWER <b>119.1 269.325</b>	GND CON <b>121.9 348.6</b>	CLNC DEL <b>124.75</b>
-------------------------------	--	--	-------------------------------	---------------------------



EC-2. 01 FEB 2018 to 01 MAR 2018

EC-2. 01 FEB 2018 to 01 MAR 2018

ELEV 814	<b>D</b>	TDZE 814
----------	----------	----------



FAF to MAP 5 NM					
Knots	60	90	120	150	180
Min:Sec	5:00	3:20	2:30	2:00	1:40

CATEGORY	A	B	C	D	E
S-5	1320/24	506 (600-1/2)	1320/50	506 (600-1)	1320/60 506 (600-1 1/4)
CIRCLING	1320-1	506 (600-1)	1320-1 1/2 506 (600-1 1/2)	1380-2 566 (600-2)	1520-2 1/2 706 (800-2 1/2)