

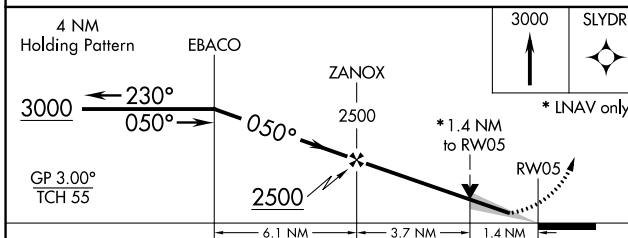
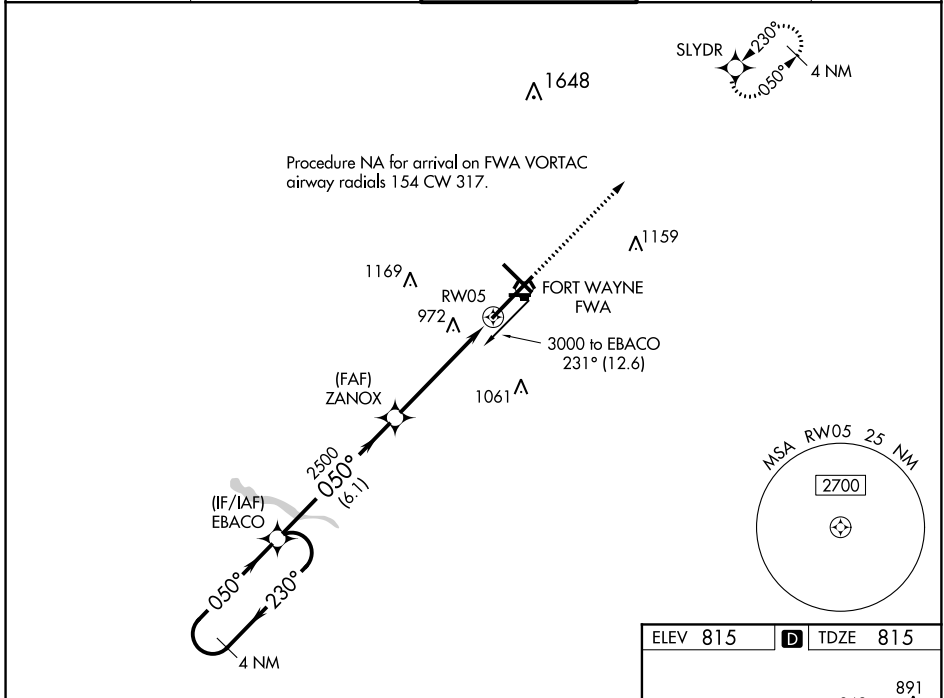
WAAS CH 93609 W05A	APP CRS 050°	Rwy Idg 11981 TDZE 815 Apt Elev 815
--	------------------------	--

RNAV (GPS) RWY 5

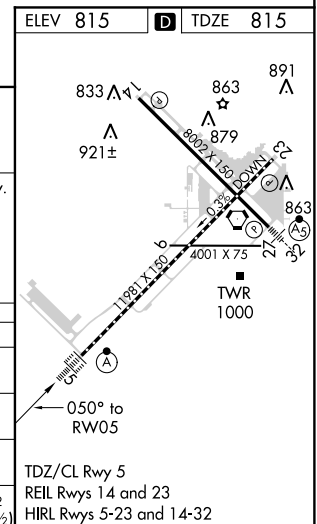
FORT WAYNE INTL (FWA)

<p>For uncompensated Baro-VNAV systems, procedure NA below -16°C (4°F) or above 47°C (116°F). DME/DME RNP-0.3 NA. For inop ALS, increase LPV Cat E visibility to RVR 4000, LNAV/VNAV all Cats visibility to 1½ SM and LNAV Cat C/D/E visibility to 1¾ SM.</p>	<p>ALS-F-2</p>	<p>MISSED APPROACH: Climb to 3000 direct SLYDR and hold.</p>
	<p>ATIS: 121.25 360.825 FORT WAYNE APP CON: 127.2 284.6 FORT WAYNE TOWER: 119.1 269.325 GND CON: 121.9 348.6 CLNC DEL: 124.75</p>	

ATIS	FORT WAYNE APP CON	FORT WAYNE TOWER	GND CON	CLNC DEL
121.25 360.825	127.2 284.6	119.1 269.325	121.9 348.6	124.75



CATEGORY	A	B	C	D	E
LPV DA		1065/18	250 (300-½)		
LNAV/VNAV DA		1275/60	460 (500-1¼)		
LNAV MDA	1300/24	485 (500-½)	1300/50	485 (500-1)	
CIRCLING	1300-1	485 (500-1)	1420-1¾ 605 (700-1¾)	1520-2¼ 705 (800-2¼)	1520-2½ 705 (800-2½)



EC-2. 01 FEB 2018 to 01 MAR 2018

EC-2. 01 FEB 2018 to 01 MAR 2018