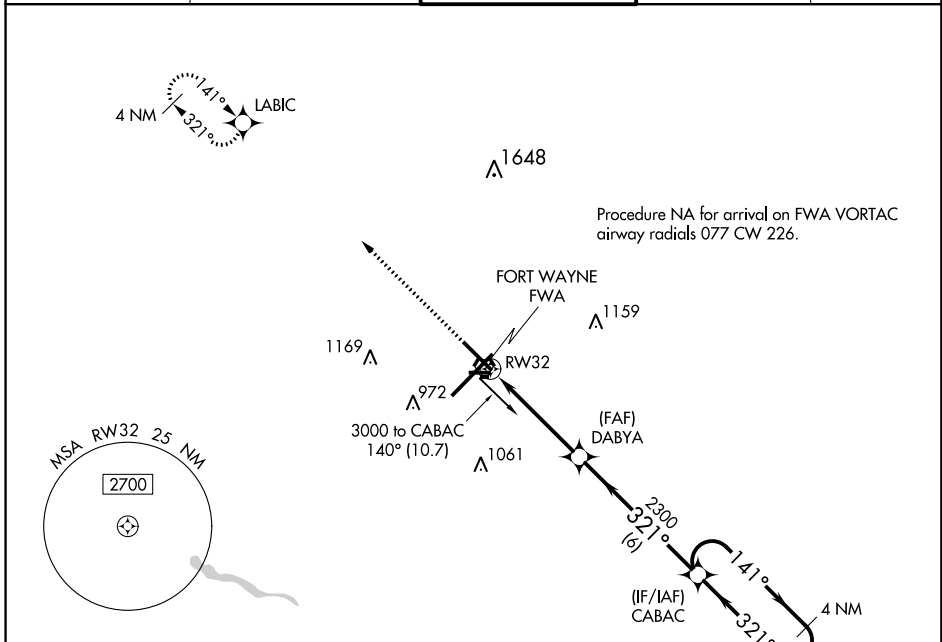


WAAS CH 82417 W32A	APP CRS 321°	Rwy Idg TDZE Apt Elev	8001 800 815
--	------------------------	-----------------------------	---

RNAV (GPS) RWY 32

FORT WAYNE INTL (FWA)

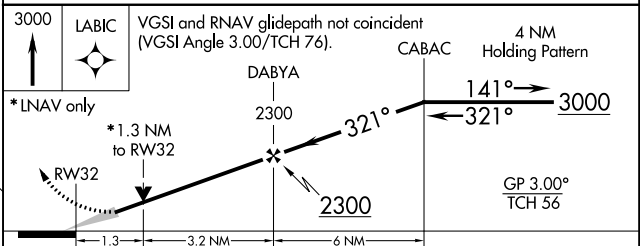
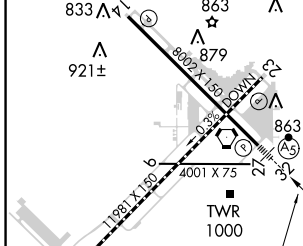
<p>For uncompensated Baro-VNAV systems, LNAV/VNAV NA below -16°C (4°F) or above 47°C (116°F). DME/DME RNP-0.3 NA. ** RVR 1800 authorized with use of FD or AP or HUD to DA.</p>		<p>MALSRL</p>	<p>MISSED APPROACH: Climb to 3000 direct LABIC and hold.</p>	
<p>ATIS 121.25 360.825</p>	<p>FORT WAYNE APP CON 127.2 284.6</p>	<p>FORT WAYNE TOWER 119.1 269.325</p>	<p>GND CON 121.9 348.6</p>	<p>CLNC DEL 124.75</p>



EC-2. 01 FEB 2018 to 01 MAR 2018

EC-2. 01 FEB 2018 to 01 MAR 2018

ELEV	815	D	TDZE	800
------	-----	----------	------	-----



	CATEGORY	A	B	C	D
LPV DA		**1000/24		200 (200-½)	
LNAV/VNAV DA		1250/50		450 (500-1)	
LNAV MDA		1280/24	480 (500-½)	1280/50	480 (500-1)
C CIRCLING		1300-1	485 (500-1)	1420-1¾ 605 (700-1¾)	1520-2¼ 705 (800-2¼)