

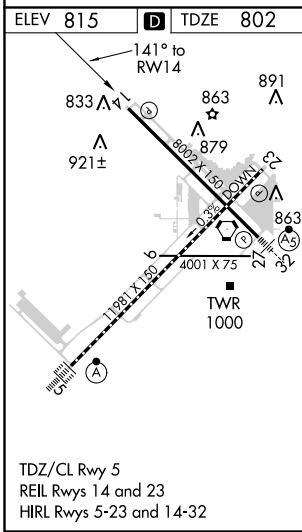
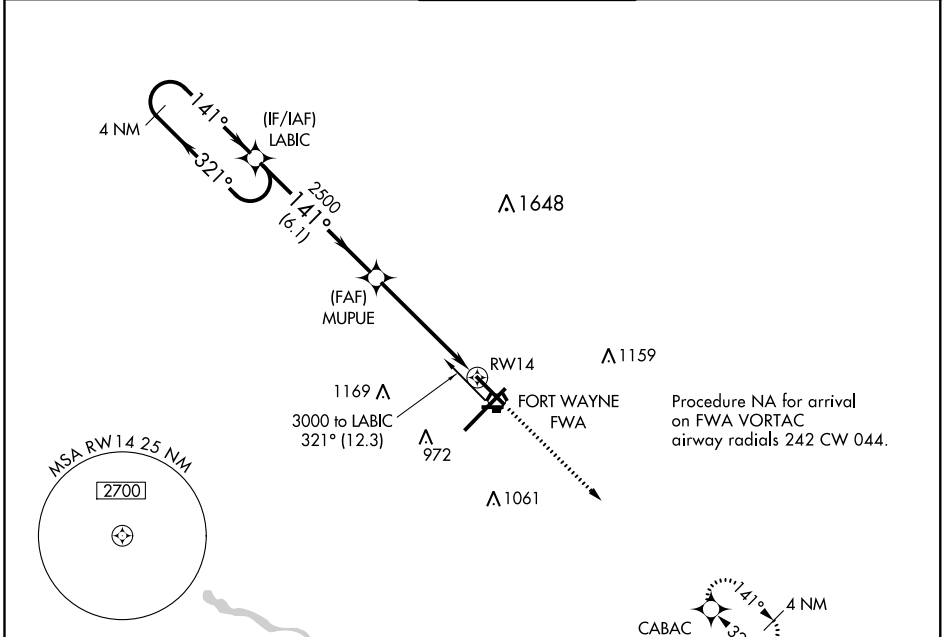
WAAS	APP CRS 141°	Rwy Idg	8001
CH 86417		TDZE	802
W14A		Apt Elev	815

RNAV (GPS) RWY 14

FORT WAYNE INTL (FWA)

 ASR	For uncompensated Baro-VNAV systems, LNAV/VNAV NA below -16°C (4°F) or above 47°C (116°F). DME/DME RNP-0.3 NA.	MISSED APPROACH: Climb to 3000 direct CABAC and hold.
---------	--	---

ATIS 121.25 360.825	FORT WAYNE APP CON 127.2 284.6	FORT WAYNE TOWER 119.1 269.325	GND CON 121.9 348.6	CLNC DEL 124.75
-------------------------------	--	--	-------------------------------	---------------------------



ELEV 815	D	TDZE 802																				
<table border="1"> <tr> <td>4 NM Holding Pattern</td> <td>LABIC</td> <td>MUPUE</td> <td>3000</td> <td>CABAC</td> </tr> <tr> <td>3000</td> <td>← 321°</td> <td>141° →</td> <td>2500</td> <td>* 1.5 NM to RWY 14</td> </tr> <tr> <td colspan="2">GP 3.00° TCH 53</td> <td>2500</td> <td>RWY 14</td> <td>* LNAV only</td> </tr> <tr> <td colspan="2"></td> <td>6.1 NM</td> <td>3.6 NM</td> <td>1.5 NM</td> </tr> </table>			4 NM Holding Pattern	LABIC	MUPUE	3000	CABAC	3000	← 321°	141° →	2500	* 1.5 NM to RWY 14	GP 3.00° TCH 53		2500	RWY 14	* LNAV only			6.1 NM	3.6 NM	1.5 NM
4 NM Holding Pattern	LABIC	MUPUE	3000	CABAC																		
3000	← 321°	141° →	2500	* 1.5 NM to RWY 14																		
GP 3.00° TCH 53		2500	RWY 14	* LNAV only																		
		6.1 NM	3.6 NM	1.5 NM																		
CATEGORY	A	B	C	D																		
LPV DA		1002- ³ / ₄	200 (200- ³ / ₄)																			
LNAV/VNAV DA		1199-1 ¹ / ₄	397 (400-1 ¹ / ₄)																			
LNAV MDA	1320-1	518 (600-1)	1320-1 ³ / ₈	518 (600-1 ³ / ₈)																		
C CIRCLING	1320-1	505 (600-1)	1420-1 ³ / ₄ 605 (700-1 ³ / ₄)	1520-2 ¹ / ₄ 705 (800-2 ¹ / ₄)																		

EC-2. 01 FEB 2018 to 01 MAR 2018

EC-2. 01 FEB 2018 to 01 MAR 2018