

WAAS CH 72724 W11A	APP CRS 106°	Rwy Idg TDZE Apt Elev	4201 1635 1635
--	------------------------	-----------------------------	---

RNAV (GPS) RWY 11

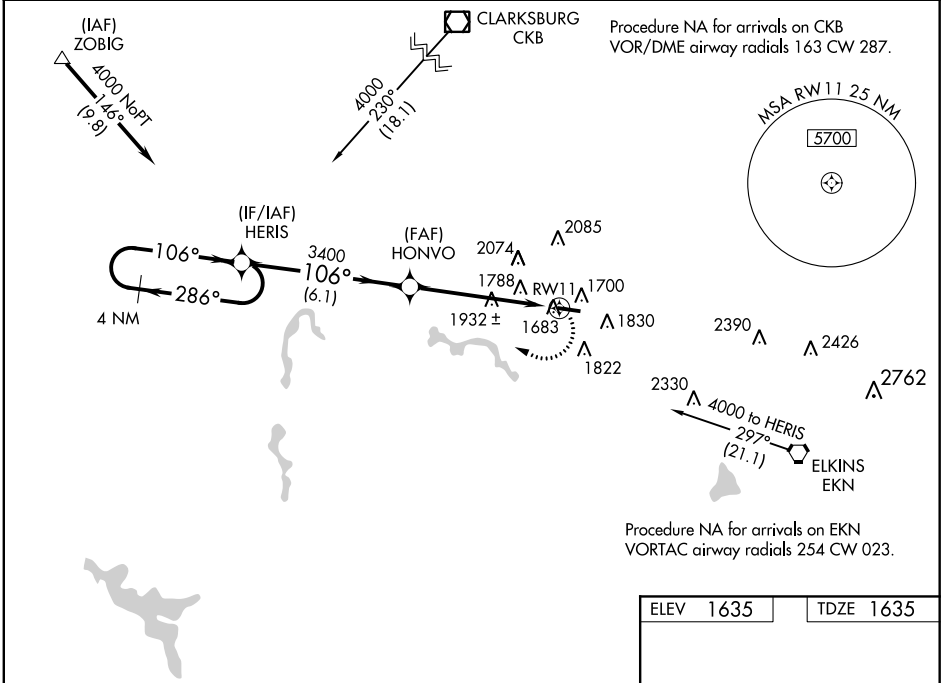
UPSHUR COUNTY RGNL (W22)

⚠ DME/DME RNP-0.3 NA, Night landing: Rwy 11 NA. Helicopter visibility reduction below 1 SM NA. When local altimeter setting not received use Clarksburg altimeter setting and increase all MDA 180 feet, increase LP Cat B visibility ¼ mile Cat C visibility ⅓ mile, LNAV Cat B visibility ¼ mile Cat C visibility ⅓ mile increase Circling Cat B visibility ¼ mile Cat C visibility ⅓ mile.

⚠ MISSED APPROACH: Climbing right turn to 4000 direct HERIS and hold.

❄ -15°C/5°F

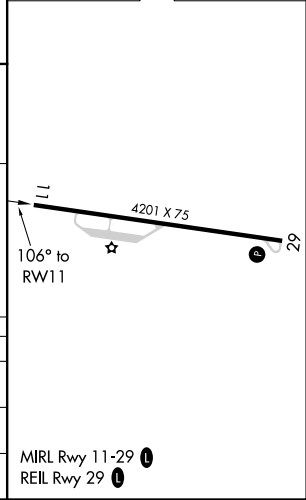
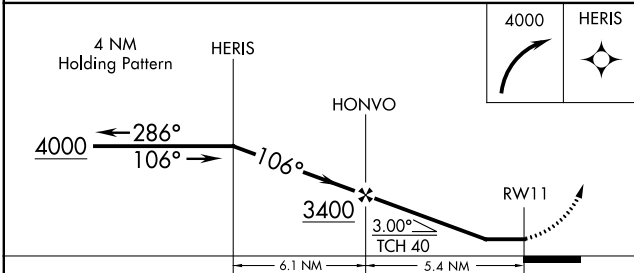
AWOS-3 119.975	CLARKSBURG APP CON * 121.15 284.65	UNICOM 122.8 (CTAF) 0
--------------------------	--	---------------------------------



NE-4, 04 JAN 2018 to 01 FEB 2018

NE-4, 04 JAN 2018 to 01 FEB 2018

ELEV 1635	TDZE 1635
-----------	-----------



CATEGORY	A	B	C	D
LP MDA	2200-1	565 (600-1)	2200-1 ⁵ / ₈ 565 (600-1 ⁵ / ₈)	NA
LNAV MDA	2240-1	605 (700-1)	2240-1 ³ / ₄ 605 (700-1 ³ / ₄)	NA
CIRCLING	2240-1	605 (700-1)	2260-1 ³ / ₄ 625 (700-1 ³ / ₄)	NA