

VORTAC LVZ	APP CRS	Rwy Idg	N/A
111.6	080°	TDZE	N/A
Chan 53		Apt Elev	1729

VOR/DME-B

SPRING HILL (70N)

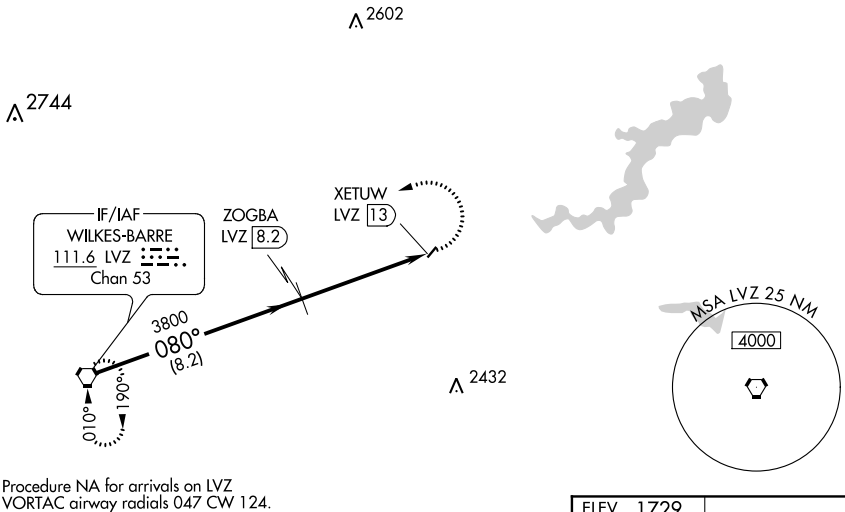
⚠ Procedure NA at night. Use Mount Pocono altimeter setting, when not received, use Wilkes-Barre/Scranton altimeter setting and increase all MDA 100 feet and Cat B Circling visibility 1/4 mile. Helicopter visibility reduction below 1 SM NA.

MISSED APPROACH: Climbing left turn to 4000 direct LVZ VORTAC and hold.

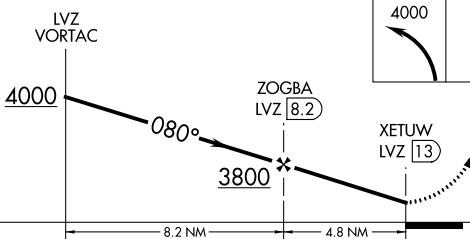
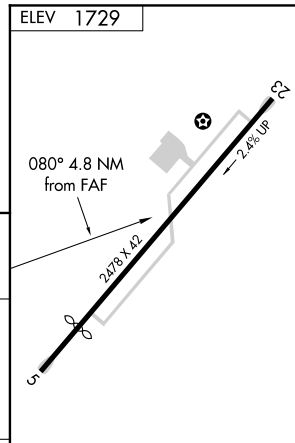
MOUNT POCONO ASOS
120.275

WILKES-BARRE APP CON
126.3 256.7

CTAF **0**
122.9



Procedure NA for arrivals on LVZ VORTAC airway radials 047 CW 124.



CATEGORY	A	B	C	D
C CIRCLING	2600-1¼ 871 (900-1¼)	2620-1¼ 891 (900-1¼)		NA

IIRL Rwy 5-23 **0**

NE-4, 04 JAN 2018 to 01 FEB 2018

NE-4, 04 JAN 2018 to 01 FEB 2018