

APP CRS <b>232°</b>	Rwy Idg TDZE Apt Elev	<b>N/A</b> <b>N/A</b> <b>1729</b>
------------------------	-----------------------------	---

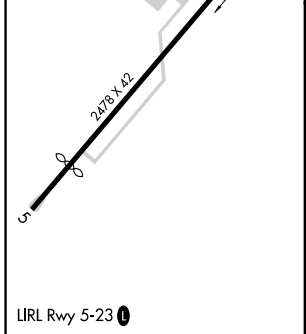
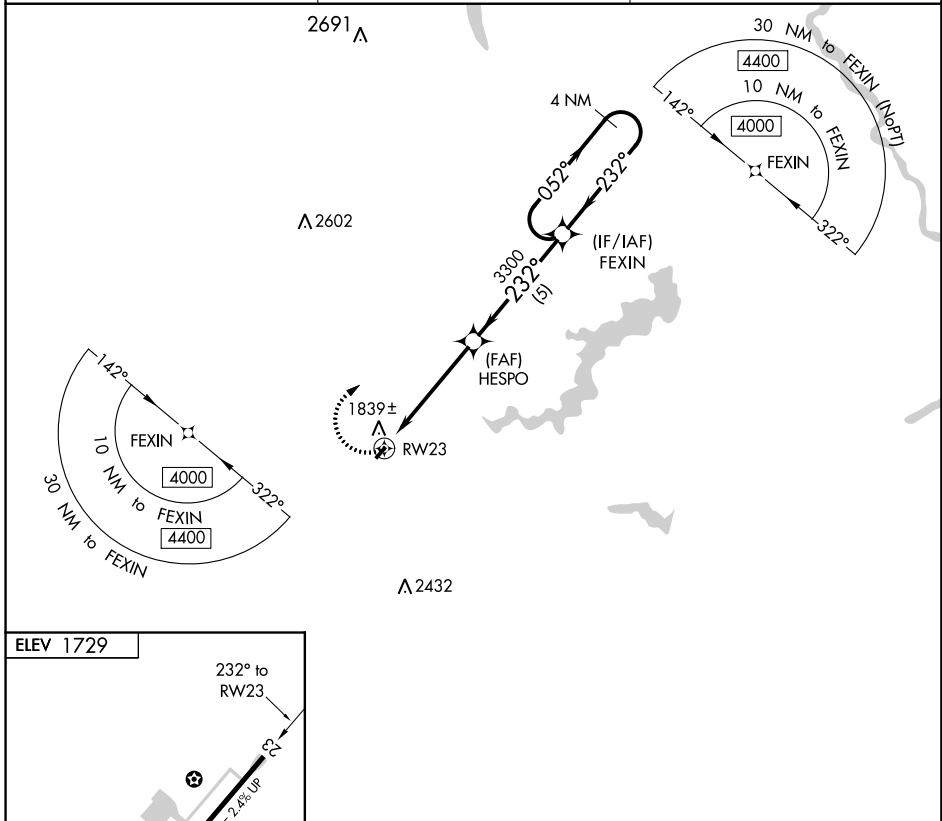
# RNAV (GPS)-A

SPRING HILL (70N)

**▽** DME/DME RNP-0.3 NA. Procedure NA at night. Use Mount Pocono altimeter setting; when not received, use Wilkes-Barre/Scranton altimeter setting and increase all MDA 100 feet and Cat B visibility ¼ mile. Helicopter visibility reduction below 1 SM NA.

**▲ NA** MISSED APPROACH: Climbing right turn to 4000 direct FEXIN and hold.

MOUNT POCONO ASOS <b>120.275</b>	WILKES-BARRE APP CON <b>126.3 256.7</b>	CTAF <b>0</b> <b>122.9</b>
-------------------------------------	--	-------------------------------



4000	FEXIN	Visual Segment - Obstacles.	FEXIN
		HESPO	4000
RW23		3300	232°
5 NM		5 NM	052°
CATEGORY	A	B	C
<b>C</b> CIRCLING	2600-1¼ 871 (900-1¼)	2620-1¼ 891 (900-1¼)	NA

NE-4, 04 JAN 2018 to 01 FEB 2018

NE-4, 04 JAN 2018 to 01 FEB 2018