

WAAS CH <b>42822</b> <b>W24A</b>	APP CRS <b>247°</b>	Rwy Idg TDZE Apt Elev	<b>5500</b> <b>665</b> <b>665</b>
--	------------------------	-----------------------------	---

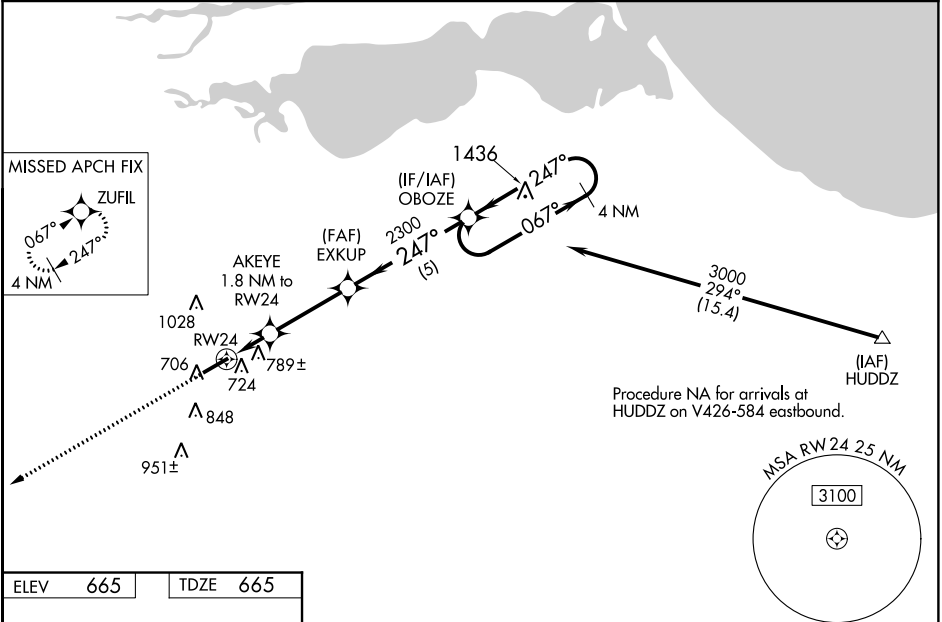
# RNAV (GPS) RWY 24

SANDUSKY COUNTY RGNL (S24)

**▼** **▲** NA  
DME/DME RNP-0.3 NA. VDP NA with Toledo Express altimeter setting. Baro-VNAV NA with Toledo express altimeter setting. For uncompensated Baro-VNAV systems, LNAV/VNAV NA below -16°C (4°F) or above 54°C (130°F). When local altimeter setting not received, use Toledo Express altimeter setting and increase all DA 93 feet and all MDA 100 feet; increase LPV and LNAV/VNAV all Cats visibility 3/8 mile, LNAV Cat C and D visibility 1/4 mile and Circling Cat C and D visibility 1/2 mile.

**MISSED APPROACH:**  
Climb to 3000, direct ZUFIL and hold.

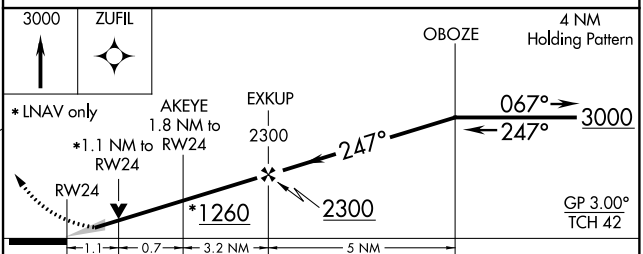
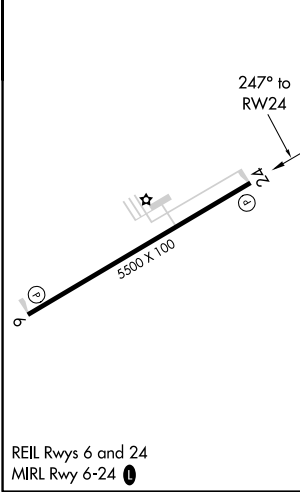
AWOS-3 <b>119.575</b>	MANSFIELD APP CON★ <b>127.35 390.8 (360°- 180°)</b> TOLEDO APP CON <b>126.1 307.0 (180°-360°)</b>	UNICOM <b>123.05 (CTAF)</b> <b>0</b>
--------------------------	--	---



EC-2, 04 JAN 2018 to 01 FEB 2018

EC-2, 04 JAN 2018 to 01 FEB 2018

ELEV	665	TDZE	665
------	-----	------	-----



CATEGORY	A	B	C	D
LPV DA		885-3/4	220 (300-3/4)	
LNAV/VNAV DA		1103-1 1/2	438 (500-1 1/2)	
LNAV MDA	1040-1	375 (400-1)	1040-1 1/8	375 (400-1 1/8)
<b>C</b> CIRCLING	1120-1 455 (500-1)	1160-1 495 (500-1)	1380-2 715 (800-2)	1380-2 1/4 715 (800-2 1/4)