

WAAS CH <b>61030</b> <b>W10A</b>	APP CRS <b>104°</b>	Rwy Idg TDZE Apt Elev	<b>3854</b> <b>780</b> <b>780</b>
--	------------------------	-----------------------------	---

# RNAV (GPS) RWY 10

LE ROY (5G4)

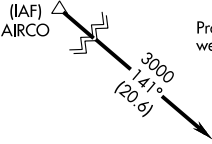
**NA** Use Greater Rochester altimeter setting. DME/DME RNP-0.3 NA. Helicopter visibility reduction below 1 SM NA. Straight-in Rwy 10 NA at night, Circling Rwy 10 NA at night. When Circling to Rwy 28 at night, operational VGSJ required, remain on or above VGSJ glidepath until threshold.

**MISSED APPROACH:** Climb to 1500 then climbing right turn to 3000 direct ZORPI and hold.

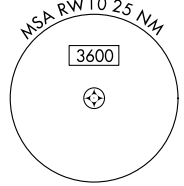
GREATER ROCHESTER INTL ASOS  
**124.825**

ROCHESTER APP CON  
**123.7 322.3**

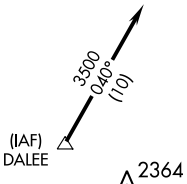
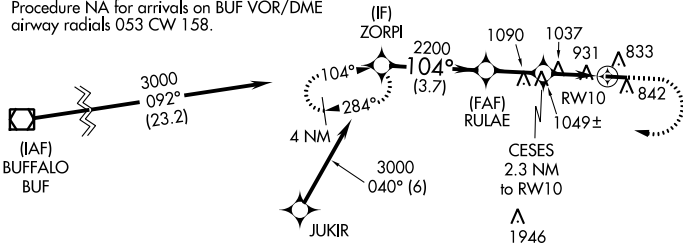
UNICOM  
**122.8 (CTAF) 0**



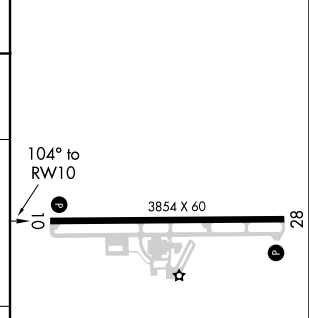
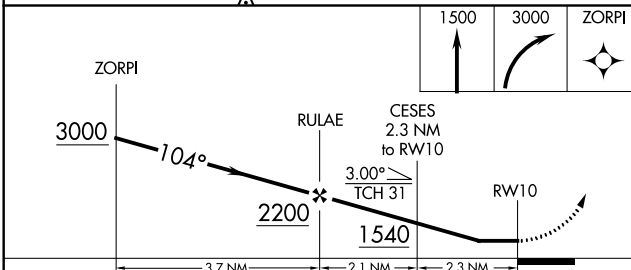
Procedure NA for arrivals at AIRCO on V31 westbound and V252 northwest bound.



Procedure NA for arrivals on BUF VOR/DME airway radials 053 CW 158.



ELEV 780	TDZE 780
----------	----------



CATEGORY	A	B	C	D
LP MDA	1360-1	580 (600-1)	NA	
LNNAV MDA	1380-1	600 (600-1)	NA	
CIRCLING	1380-1	600 (600-1)	NA	

MIRL Rwy 10-28 0  
REIL Rwy 10 and 28 0

NE-2, 04 JAN 2018 to 01 FEB 2018

NE-2, 04 JAN 2018 to 01 FEB 2018