

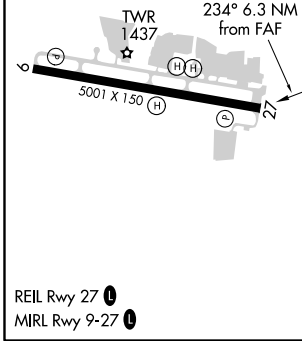
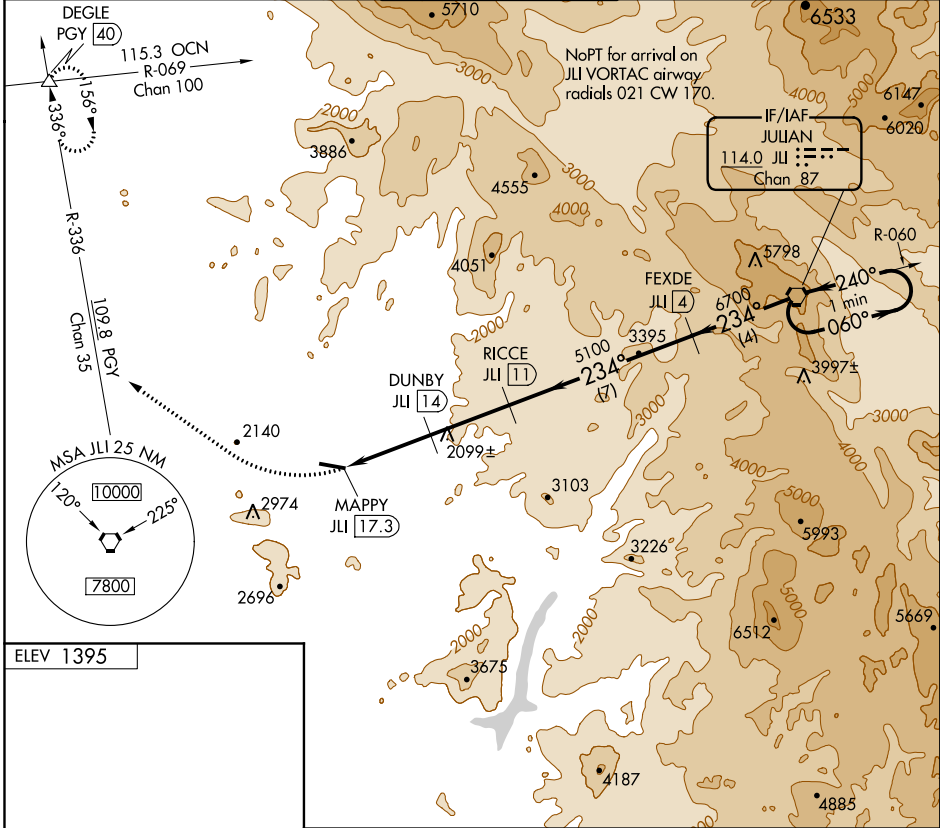
VORTAC JLI <b>114.0</b> Chan 87	APP CRS <b>234°</b>	Rwy Idg TDZE Apt Elev <b>1395</b>	N/A N/A
---------------------------------------	------------------------	---	------------

# VOR/DME-A RAMONA (RNM)

**⚠** Circling NA north of Rwy 9-27.  
When local altimeter setting not received, use Gillespie Field altimeter setting and increase all MDA 180 feet.

MISSED APPROACH: Climbing right turn to 5000 via heading 290° and PGY VORTAC R-336 to DEGLE/PGY 40 DME and hold.

ATIS <b>132.025</b>	SOCAL APP CON <b>132.2 269.1</b>	RAMONA TOWER ★ <b>119.875 (CTAF) ①</b>	GND CON <b>121.65</b>	UNICOM <b>122.95</b>
------------------------	-------------------------------------	---	--------------------------	-------------------------



5000 hdg 290° PGY R-336 DEGLE △	One Minute Holding Pattern			
	JLI VORTAC	FEXDE JLI ④	RICCE JLI ⑪	DUNBY JLI ⑭
	MAPPY JLI ⑰.③	5100	6700	7700
	← 3.3 NM →	← 3 NM →	← 7 NM →	← 4 NM →
CATEGORY	A	B	C	D
CIRCLING	2580-1¼ 1185 (1200-1¼)	2580-1½ 1185 (1200-1½)	2580-3 1185 (1200-3)	NA

SW-3, 04 JAN 2018 to 01 FEB 2018

SW-3, 04 JAN 2018 to 01 FEB 2018