

NORWALK, OHIO

AL-6640 (FAA)

17285

WAAS CH 86835 W28A	APP CRS 276°	Rwy Idg TDZE Apt Elev	3542 851 852
--	------------------------	-----------------------------	---

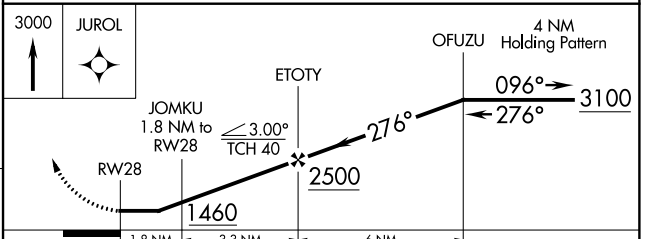
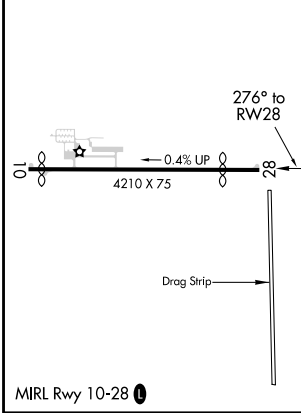
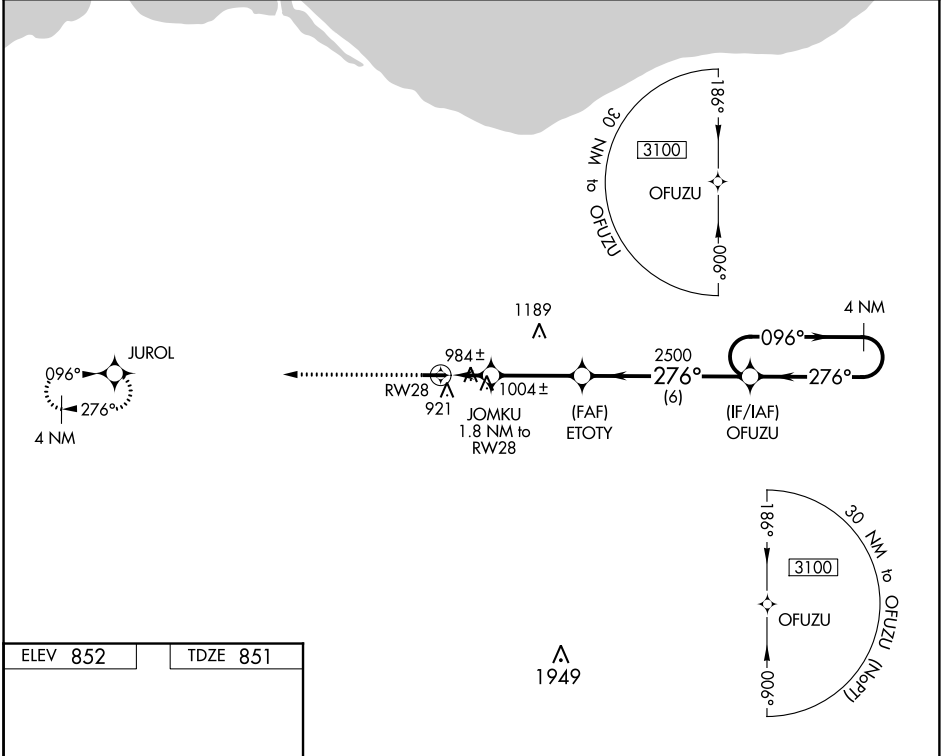
RNAV (GPS) RWY 28

NORWALK-HURON COUNTY (5A1)

▼ Use Cleveland-Hopkins Intl altimeter setting. DME/DME RNP-0.3 NA.
▲ NA Procedure NA at night. Helicopter visibility reduction below 1 SM NA.

MISSED APPROACH: Climb to 3000 direct JUROL and hold.

CLEVELAND-HOPKINS INTL ASOS 127.85	MANSFIELD APP CON * 124.2 390.8	UNICOM 122.8 (CTAF) 0
--	---	---------------------------------



CATEGORY	A	B	C	D
LP MDA	1320-1	469 (500-1)	1320-1 $\frac{1}{8}$ 469 (500-1 $\frac{3}{8}$)	NA
LNAV MDA	1340-1	489 (500-1)	1340-1 $\frac{1}{8}$ 489 (500-1 $\frac{3}{8}$)	NA
C CIRCLING	1400-1 548 (600-1)	1420-1 568 (600-1)	1440-1 $\frac{1}{2}$ 588 (600-1 $\frac{1}{2}$)	NA

NORWALK, OHIO
Orig-A 23JUN16

41°15'N-82°33'W

NORWALK-HURON COUNTY (5A1)

RNAV (GPS) RWY 28

EC-2, 04 JAN 2018 to 01 FEB 2018

EC-2, 04 JAN 2018 to 01 FEB 2018