

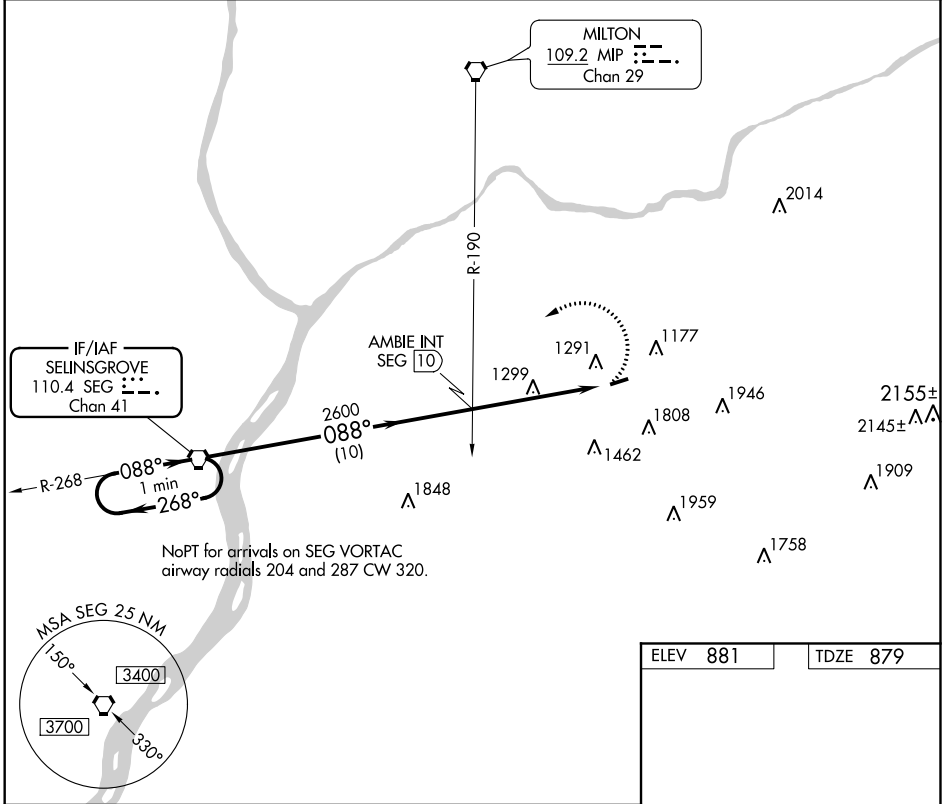
VORTAC SEG <b>110.4</b> Chan 41	APP CRS <b>088°</b>	Rwy Idg TDZE Apt Elev	<b>3297</b> <b>879</b> <b>881</b>
---------------------------------------	------------------------	-----------------------------	---

**VOR RWY 8**  
NORTHUMBERLAND COUNTY (N79)

**▽** When local altimeter setting not received, use Selinsgrove altimeter setting and increase all MDA 100 feet. Procedure NA at night.  
**△ NA** Helicopter visibility reduction below 1 SM NA.

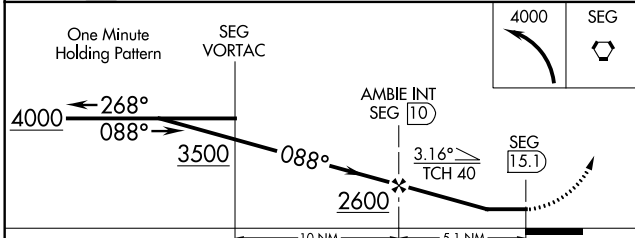
**MISSED APPROACH:** Climbing left turn to 4000 direct SEG VORTAC and hold.

AWOS-3 <b>119.175</b>	HARRISBURG APP CON <b>118.25 269.45</b>	UNICOM <b>122.8 (CTAF)</b>	<b>121.8 0</b>
--------------------------	--	-------------------------------	----------------



NE-4, 04 JAN 2018 to 01 FEB 2018

NE-4, 04 JAN 2018 to 01 FEB 2018



ELEV 881	TDZE 879
----------	----------

MRL Rwy 8-26	REIL Rws 8 and 26
FAF to MAP 5.1 NM	
Knots	60 90 120 150 180
Min:Sec	5:06 3:24 2:33 2:02 1:42

CATEGORY	A	B	C	D
S-8	1980-1¼ 1101 (1200-1¼)	1980-1½ 1101 (1200-1½)	1980-3 1101 (1200-3)	NA
CIRCLING	1980-1¼ 1099 (1100-1¼)	1980-1½ 1099 (1100-1½)	1980-3 1099 (1100-3)	NA