

WAAS CH 50424 W26A	APP CRS 264°	Rwy Idg TDZE Apt Elev	3297 881 881
--	------------------------	-----------------------------	---

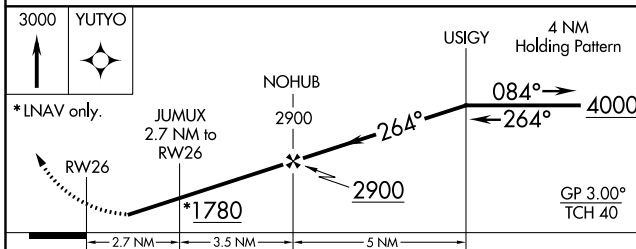
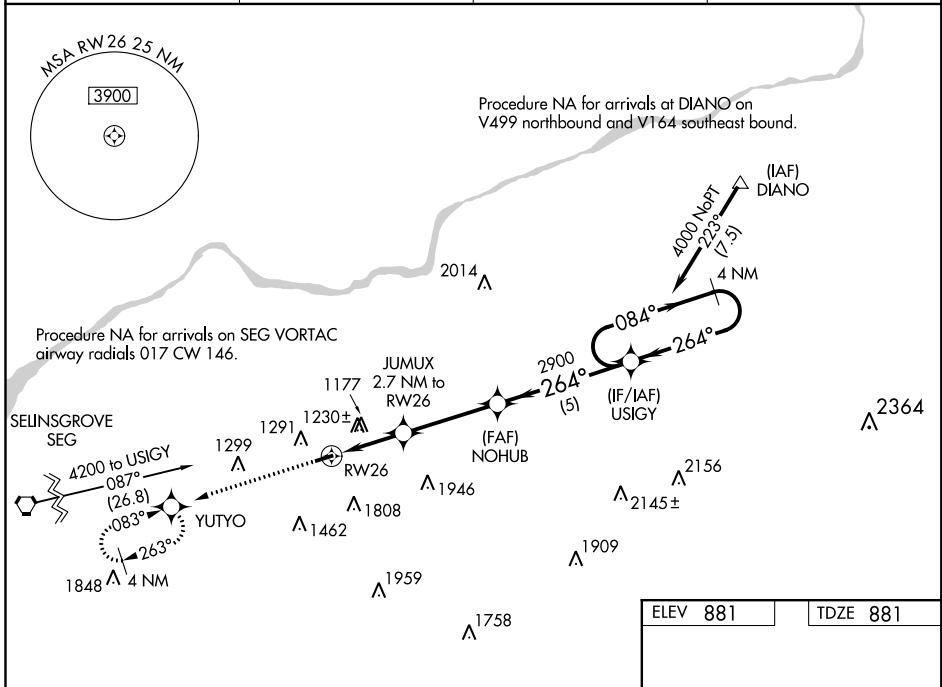
RNAV (GPS) RWY 26

NORTHUMBERLAND COUNTY (N79)

▼ Baro-VNAV NA when using Selinsgrove altimeter setting. For uncompensated Baro-VNAV systems, LNAV/VNAV NA below -16°C (4°F) or above 54°C (130°F).
▲ NA When local altimeter setting not received, use Selinsgrove altimeter setting and increase all DA 94 feet and all MDA 100 feet, increase visibility LPV all Cats 3/8 mile. LNAV/VNAV all Cats 1/4 mile and LNAV Cat C 1/4 mile. DME/DME RNP-0.3 NA. Procedure NA at night. Helicopter visibility reduction below 1 SM NA.

MISSED APPROACH:
Climb to 3000 direct YUTYO and hold.

AWOS-3 119.175	HARRISBURG APP CON 118.25 269.45	UNICOM 122.8 (CTAF)	121.8 0
--------------------------	--	-------------------------------	-----------------------



ELEV 881	TDZE 881
MIRL Rwy 8-26 0 REIL Rws 8 and 26	

CATEGORY	A	B	C	D
LPV DA	1436-1 7/8 555 (600-1 7/8)			NA
LNAV/VNAV DA	1559-2 1/2 678 (700-2 1/2)			NA
LNAV MDA	1480-1 599 (600-1)	1480-1 1/4 599 (600-1 1/4)		NA
CIRCLING	1820-1 1/4 939 (1000-1 1/4)	1860-1 1/2 979 (1000-1 1/2)	1880-3 999 (1000-3)	NA

NE-4, 04 JAN 2018 to 01 FEB 2018

NE-4, 04 JAN 2018 to 01 FEB 2018