

APP CRS	Rwy Idg	<b>2994</b>
<b>057°</b>	TDZE	<b>87</b>
	Apt Elev	<b>87</b>

# RNAV (GPS) RWY 6

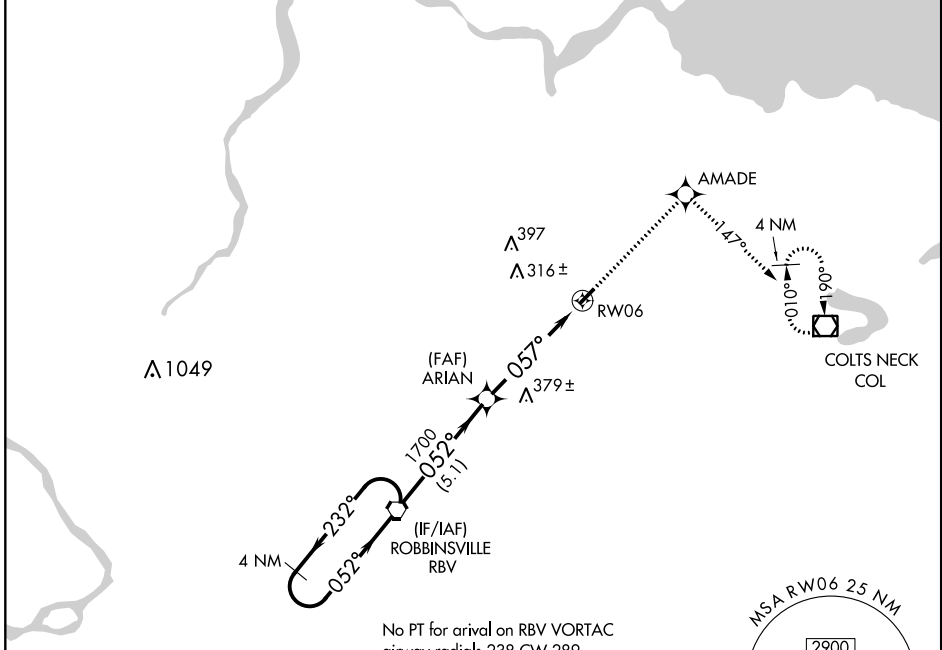
OLD BRIDGE (3N6)

**V** DME/DME RNP-0.3 NA. Procedure NA at night. Helicopter visibility reduction below 1 SM NA. Use Belmar/Farmingdale altimeter setting; when not received, use Wrightstown altimeter setting and increase all MDA 20 feet.

**Δ** NA

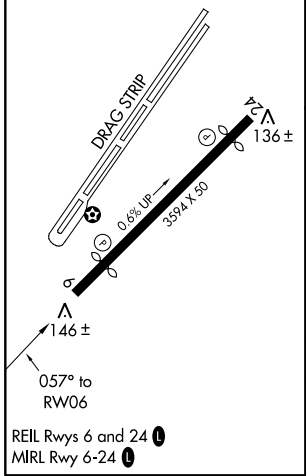
**MISSED APPROACH:** Climb to 2000 direct AMADE and via track 147° to COL VOR/DME and hold.

BELMAR/FARMINGDALE AWOS-3PT <b>121.625</b>	MC GUIRE APP CON <b>124.15 363.8</b>	GCO <b>121.725</b>	UNICOM <b>123.075 (CTAF) 0</b>
---	---	-----------------------	-----------------------------------



No PT for arrival on RBV VORTAC  
airway radials 238 CW 289.

ELEV 87	TDZE 87
---------	---------



VGSIs and descent angles not coincident (VGSIs Angle 4.00/TCH 25).		2000	AMADE	tr 147°	COL
4 NM Holding Pattern		↑	✦		◻
RBV VORTAC		ARIAN		RW06	
1700 ← 232°		→ 052°		→ 057°	
		3.04°		TCH 40	
		-5.1 NM		-4.9 NM	
CATEGORY	A	B	C	D	
RNAV MDA	660-1	573 (600-1)	NA		
CIRCLING	660-1	573 (600-1)	NA		

NE-2, 04 JAN 2018 to 01 FEB 2018

NE-2, 04 JAN 2018 to 01 FEB 2018