

APP CRS	Rwy Idg	3194
237°	TDZE	87
	Apt Elev	87

RNAV (GPS) RWY 24

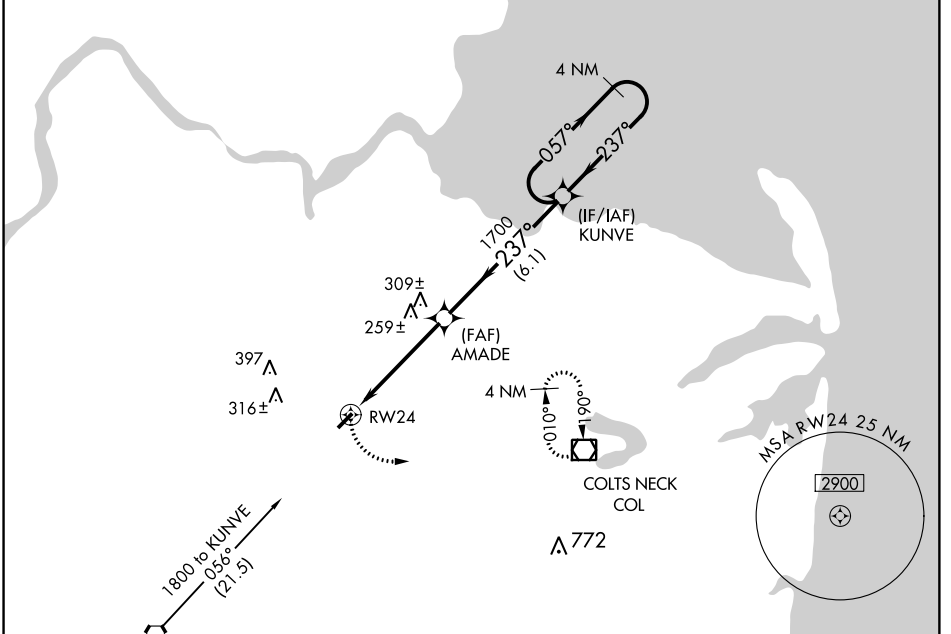
OLD BRIDGE (3N6)

▽ DME/DME RNP-0.3 NA. Procedure NA at night. Helicopter visibility reduction below 1 SM NA. Use Belmar/Farmingdale altimeter setting; when not received, use Wrightstown altimeter setting and increase all MDA 20 feet.

△ NA

MISSED APPROACH: Climbing left turn to 2000 direct COL VOR/DME and hold.

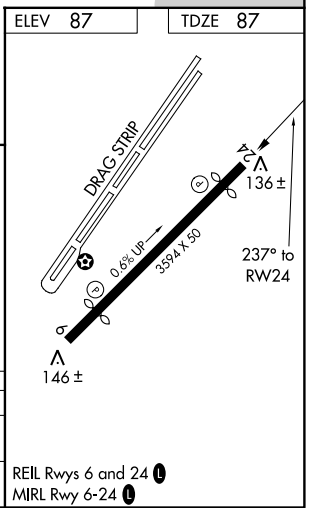
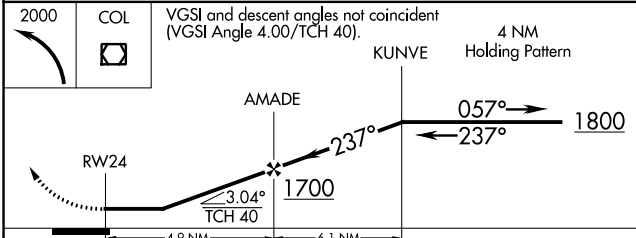
BELMAR/FARMINGDALE AWOS-3PT 121.625	MC GUIRE APP CON 124.15 363.8	GCO 121.725	UNICOM 123.075 (CTAF) ①
---	---	-----------------------	--



NE-2, 04 JAN 2018 to 01 FEB 2018

NE-2, 04 JAN 2018 to 01 FEB 2018

ELEV 87	TDZE 87
---------	---------



CATEGORY	A	B	C	D
LNAV MDA	560-1	473 (500-1)	NA	
CIRCLING	620-1 533 (600-1)	640-1 553 (600-1)	NA	

REIL Rwy 6 and 24 **①**
MIRL Rwy 6-24 **①**