

VORTAC BTG <b>116.6</b> Chan <b>113</b>	APP CRS <b>255°</b>	Rwy Idg TDZE Apt Elev <b>N/A</b> <b>N/A</b> <b>58</b>
---	------------------------	--

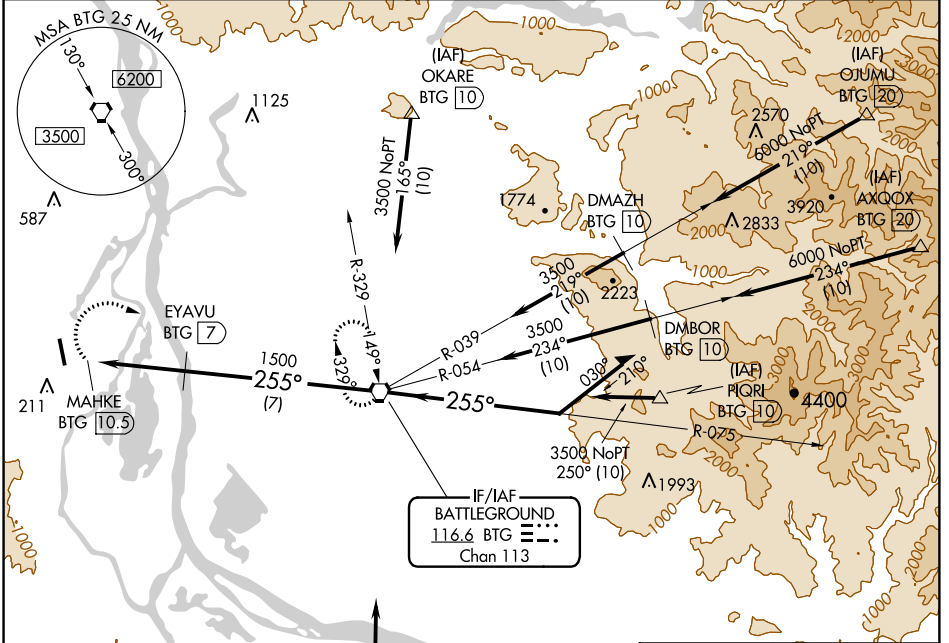
# VOR/DME-A

SCAPOOSE INDUSTRIAL AIRPARK (SPB)

**⚠** Circling NA west of Rwy 15-33. Helicopter visibility reduction below 1 SM NA. When local altimeter setting not received, use Portland Intl altimeter setting and increase all MDA 40 ft. Circling to Rwy 15 NA at night.

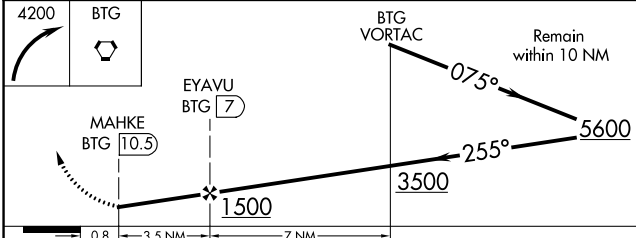
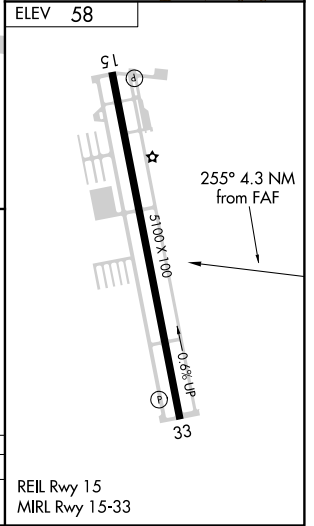
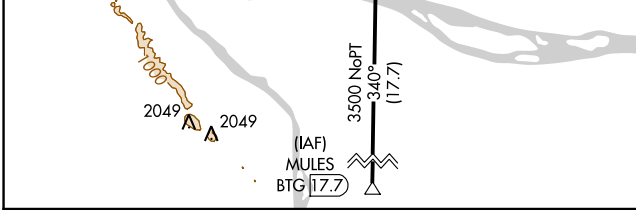
**⚠** MISSED APPROACH: Climbing right turn to 4200 direct BTG VORTAC and hold, continue climb-in-hold to 4200.

ASOS <b>135.875</b>	PORTLAND APP CON <b>124.35 299.2</b>	CLNC DEL <b>121.65</b>	UNICOM <b>122.8</b> (CTAF)
------------------------	---	---------------------------	-------------------------------



NW-1, 04 JAN 2018 to 01 FEB 2018

NW-1, 04 JAN 2018 to 01 FEB 2018



CATEGORY	A	B	C	D
CIRCLING	600-1 542 (600-1)		600-1½ 542 (600-1½)	620-2 562 (600-2)

REIL Rwy 15  
MIRL Rwy 15-33