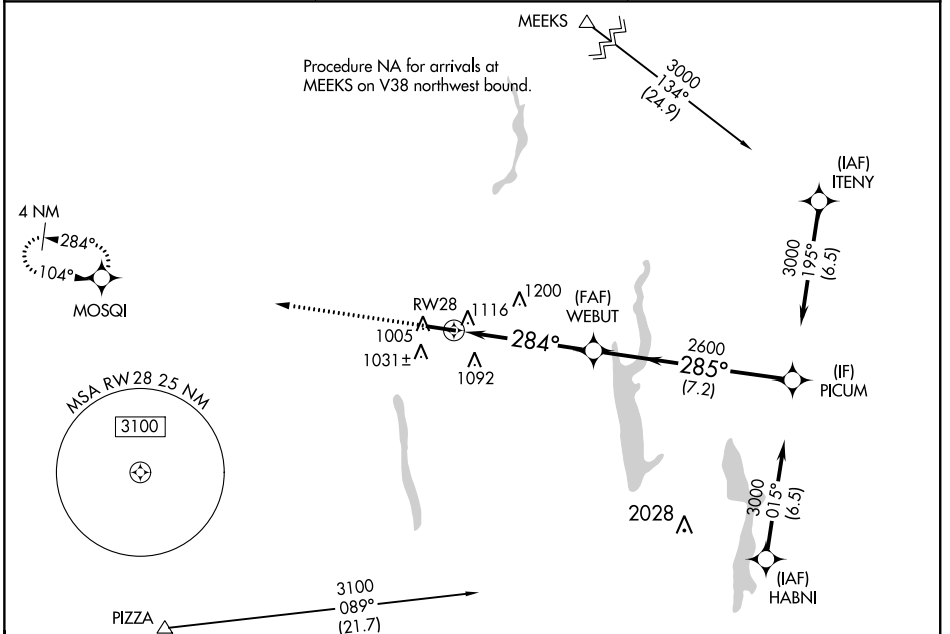


WAAS CH 50506 W28A	APP CRS 284°	Rwy Idg 5800 TDZE 945 Apt Elev 945
--	------------------------	---

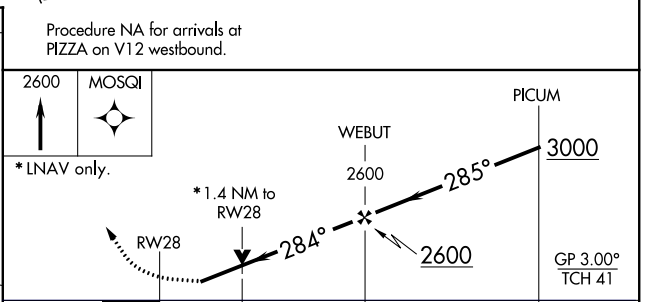
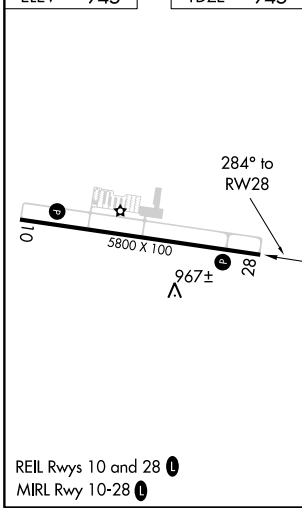
RNAV (GPS) RWY 28

DELAWARE MUNI-JIM MOORE FIELD (DLZ)

▽ For uncompensated Baro-VNAV systems, LNAV/VNAV NA below -16°C (4°F) or above 54°C (130°F). DME/DME RNP-0.3 NA. Rwy 28 helicopter visibility reduction below ¾ SM NA.	MISSED APPROACH: Climb to 2600 direct MOSQI and hold.	
AWOS-3 119.025	COLUMBUS APP CON 125.95 317.775	UNICOM 122.7 (CTAF) 0



ELEV 945	TDZE 945
-----------------	-----------------



CATEGORY	A	B	C	D
LPV DA		1195-7/8	250 (300-7/8)	
LNAV/VNAV DA		1406-1 3/4	461 (500-1 3/4)	
LNAV MDA	1420-1	475 (500-1)	1420-1 3/8	475 (500-1 3/8)
C CIRCLING	1420-1	475 (500-1)	1560-1 3/4 615 (700-1 3/4)	1560-2 615 (700-2)

EC-2, 04 JAN 2018 to 01 FEB 2018

EC-2, 04 JAN 2018 to 01 FEB 2018