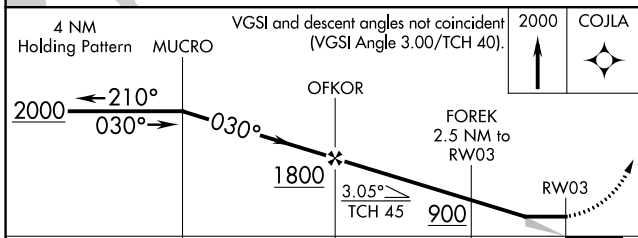
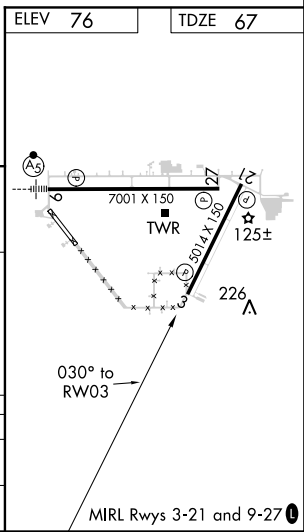
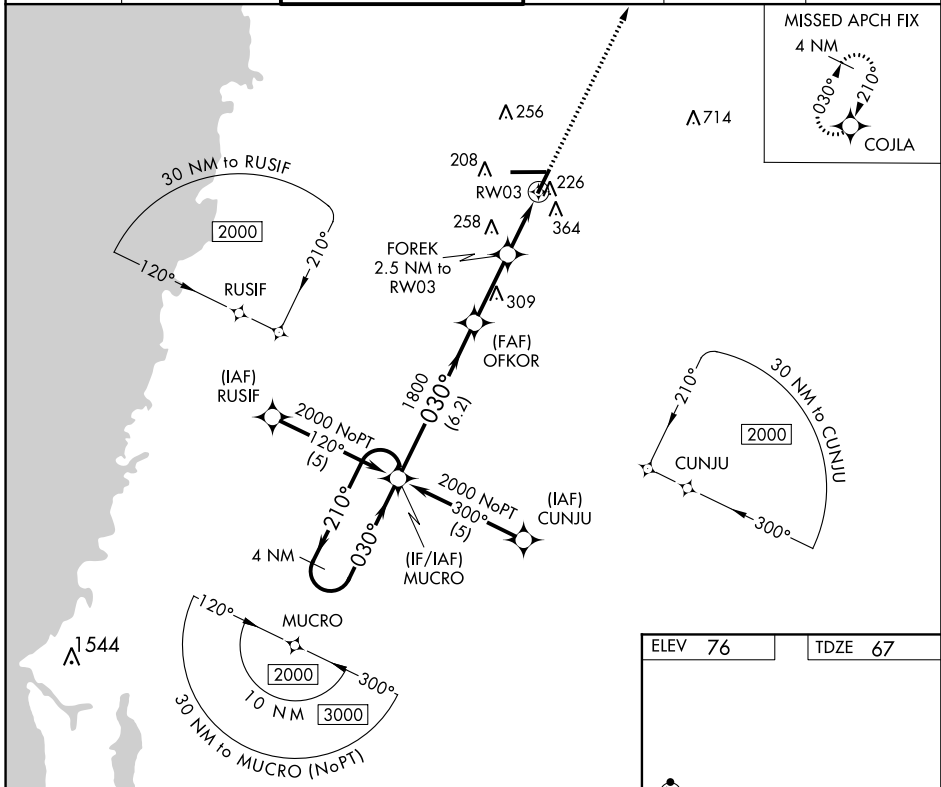


APP CRS	Rwy Idg	<b>5014</b>
<b>030°</b>	TDZE	<b>67</b>
	Apt Elev	<b>76</b>

# RNAV (GPS) RWY 3

BROOKSVILLE-TAMPA BAY RGNL (BKV)

<p><b>⚠</b> DME/DME RNP-0.3 NA. When local altimeter setting not received, use Tampa Intl altimeter setting and increase all MDA 80 feet and increase LNAV Cat D visibility ¼ mile.</p>				<p>MISSED APPROACH: Climb to 2000 direct COJLA and hold.</p>	
ASOS	TAMPA APP CON	BROOKSVILLE TOWER ★	GND CON	CINC DEL	UNICOM
<b>134.725</b>	<b>125.3 316.05</b>	<b>118.55 (CTAF) 0</b>	<b>121.4</b>	<b>119.125</b>	<b>123.0</b>



CATEGORY	A	B	C	D
LNAV MDA	480-1	413 (500-1)	480-1¼	413 (500-1¼)
CIRCLING	680-1	604 (700-1)	680-1¾	680-2
			604 (700-1¾)	604 (700-2)

SE-3: 04 JAN 2018 to 01 FEB 2018

SE-3: 04 JAN 2018 to 01 FEB 2018