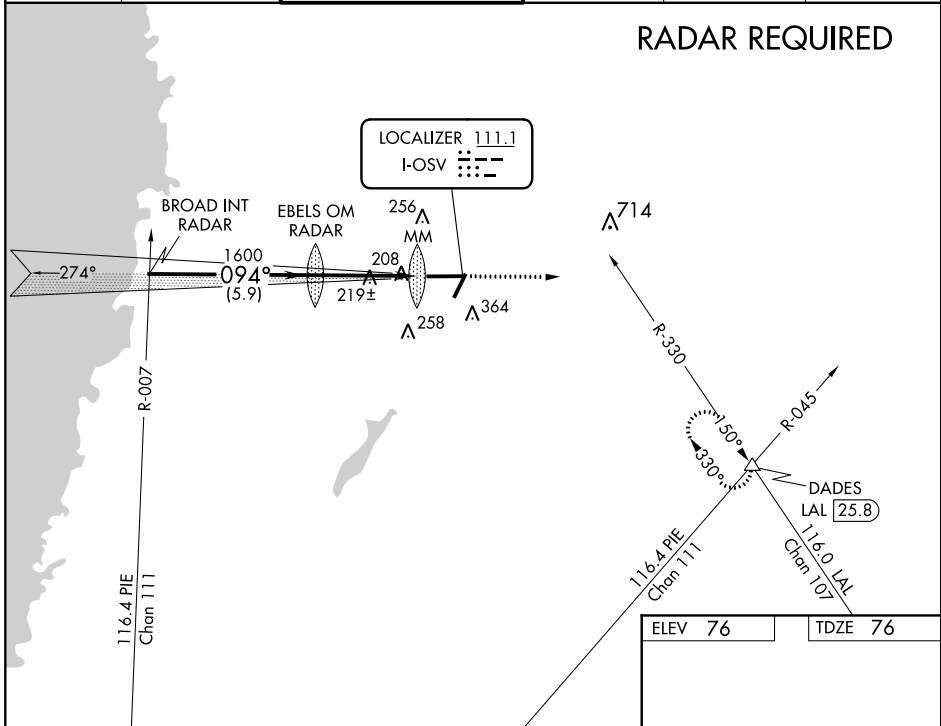


LOC I-OSV 111.1	APP CRS 094°	Rwy Idg TDZE Apt Elev	7001 76 76
---------------------------	------------------------	-----------------------------	---------------------------------------

ILS or LOC RWY 9
BROOKSVILLE-TAMPA BAY RGNL (BKV)

<p>▼ DME required. When local altimeter setting not received use Tampa Intl altimeter setting and increase all DA to 353 and all MDA 80 feet, increase S-LOC 9 Cat D and Circling Cat C/D visibility ¼ mile. For inop MALSR when using Tampa Intl increase S-ILS 9 all Cats visibility to 1 mile. Circling to Rwy 3/21/27 NA at night.</p>	<p>MALSR</p>	<p>MISSED APPROACH: Climb to 3000 on heading 090° and LAL R-330 to DADES/LAL 25.8 DME and hold.</p>

ASOS 134.725	TAMPA APP CON 125.3 316.05	BROOKSVILLE TOWER ★ 118.55 (CTAF) 0	GND CON 121.4	CLNC DEL 119.125	UNICOM 123.0
------------------------	--------------------------------------	---	-------------------------	----------------------------	------------------------



SE-3. 04 JAN 2018 to 01 FEB 2018

SE-3. 04 JAN 2018 to 01 FEB 2018

BROAD INT RADAR		EBELS OM RADAR		3000	LAL R-330	DADES △
2000		1438		hdg 090°	094° 4.1 NM from FAF	
GS 3.00° TCH 57		1600		MM	7001 X 150	TWR
5.9 NM		3.7 NM		0.4	27	125±
CATEGORY	A	B	C	D	MIRL Rwys 3-21 and 9-27	
S-ILS 9	276-½		200 (200-½)		FAF to MAP 4.1 NM	
S-LOC 9	480-½	404 (500-½)	480-¾	404 (500-¾)	Knots 60 90 120 150 180	
CIRCLING	680-1	604 (700-1)	680-1¾	604 (700-2)	Min:Sec 4:06 2:44 2:03 1:38 1:22	