

VOR/DME LWV 108.8 Chan 25	APP CRS 211°	Rwy Ldg TDZE Apt Elev	4000 429 429
--	------------------------	-----------------------------	---

VOR/DME RWY 22

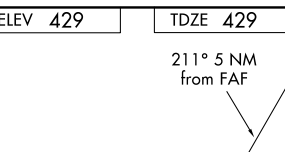
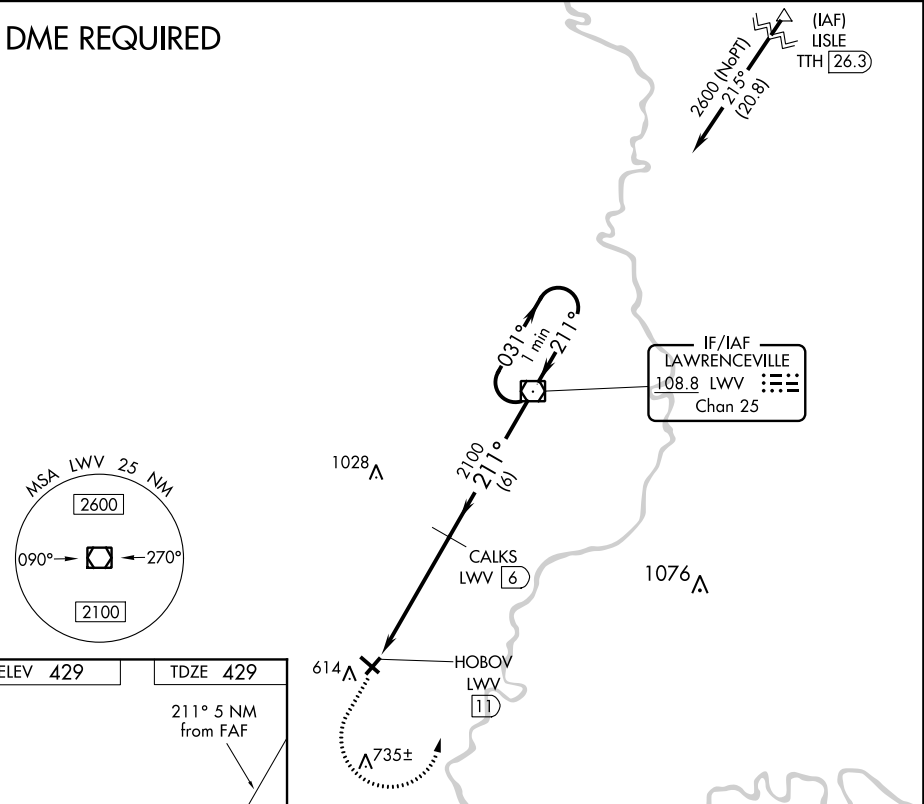
MOUNT CARMEL MUNI (AJG)

⚠ When local altimeter setting not received, use Lawrenceville altimeter setting and increase all MDA 40 feet and all Cat C visibility $\frac{1}{8}$ mile. Procedure NA at night. Helicopter visibility reduction below 1 SM NA.

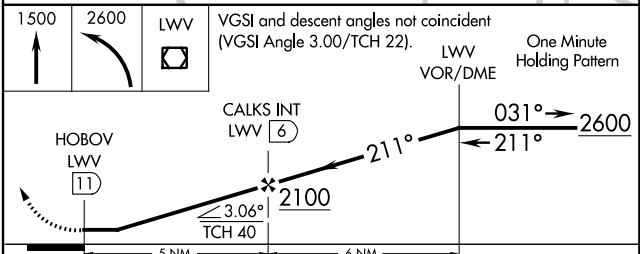
MISSED APPROACH: Climb to 1500 then climbing left turn to 2600 direct LWV VOR/DME and hold.

AWOS-3 134.9	EVANSVILLE APP CON* 125.6 343.7	UNICOM 122.7 (CTAF) 0
------------------------	---	---------------------------------

DME REQUIRED



ELEV 429	TDZE 429				
211° 5 NM from FAF					
REIL Rwy 4, 13, 22 and 31					
MIRL Rwy 4-22 and 13-31					
FAF to MAP 5 NM					
Knots	60	90	120	150	180
Min:Sec	5:00	3:20	2:30	2:00	1:40



CATEGORY	A	B	C	D
S-22	1000-1	571 (600-1)	1000-1 $\frac{1}{8}$ 571 (600-1 $\frac{1}{8}$)	NA
CIRCLING	1000-1	571 (600-1)	1000-1 $\frac{1}{8}$ 571 (600-1 $\frac{1}{8}$)	NA