

# RNAV (GPS) RWY 4

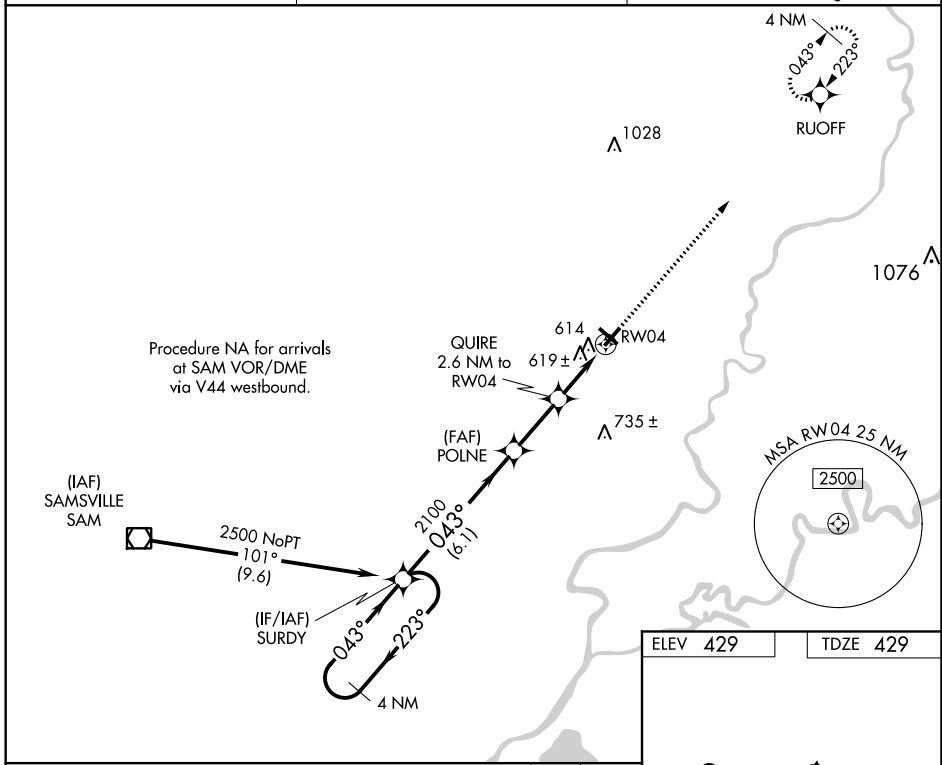
MOUNT CARMEL MUNI (AJG)

APP CRS	Rwy Idg	<b>4000</b>
<b>043°</b>	TDZE	<b>429</b>
	Apt Elev	<b>429</b>

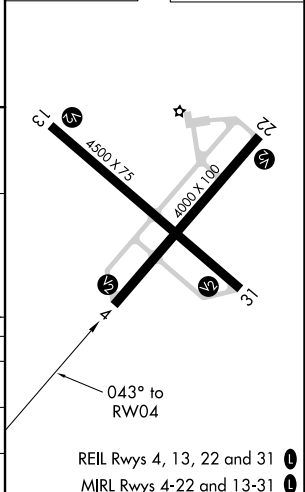
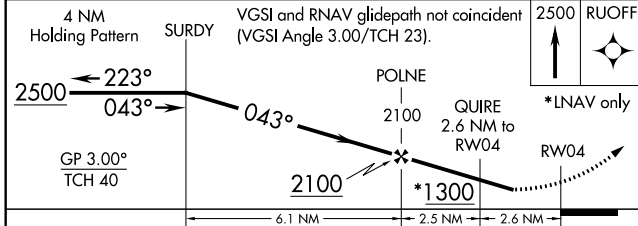
**⚠** Baro-VNAV NA when using Lawrenceville altimeter setting. For uncompensated Baro-VNAV systems, LNAV/VNAV NA below -15°C (5°F) or above 54°C (130°F). DME/DME RNP-0.3 NA. Helicopter visibility reduction below 3/4 SM NA. When local altimeter setting not received, use Lawrenceville altimeter setting and increase all DA 26 feet and all MDA 40 feet, increase LNAV/VNAV all Cats visibility 1/4 mile.

**MISSED APPROACH:**  
Climb to 2500 direct RUOFF and hold.

AWOS-3 <b>134.9</b>	EVANSVILLE APP CON* <b>125.6 343.7</b>	UNICOM <b>122.7 (CTAF) 0</b>
------------------------	---	---------------------------------



ELEV 429	TDZE 429
----------	----------



CATEGORY	A	B	C	D
LNAV/ VNAV DA	937-1 3/4 508 (600-1 1/2)			NA
LNAV MDA	920-1	491 (500-1)	920-1 1/4 491 (500-1 1/4)	NA
CIRCLING	980-1	551 (600-1)	980-1 1/2 551 (600-1 1/2)	NA

EC-3, 04 JAN 2018 to 01 FEB 2018

EC-3, 04 JAN 2018 to 01 FEB 2018