

WAAS CH 53317 W22A	APP CRS 223°	Rwy Idg TDZE 4000 429 Apt Elev 429
--	------------------------	---

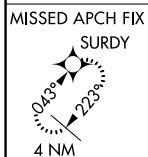
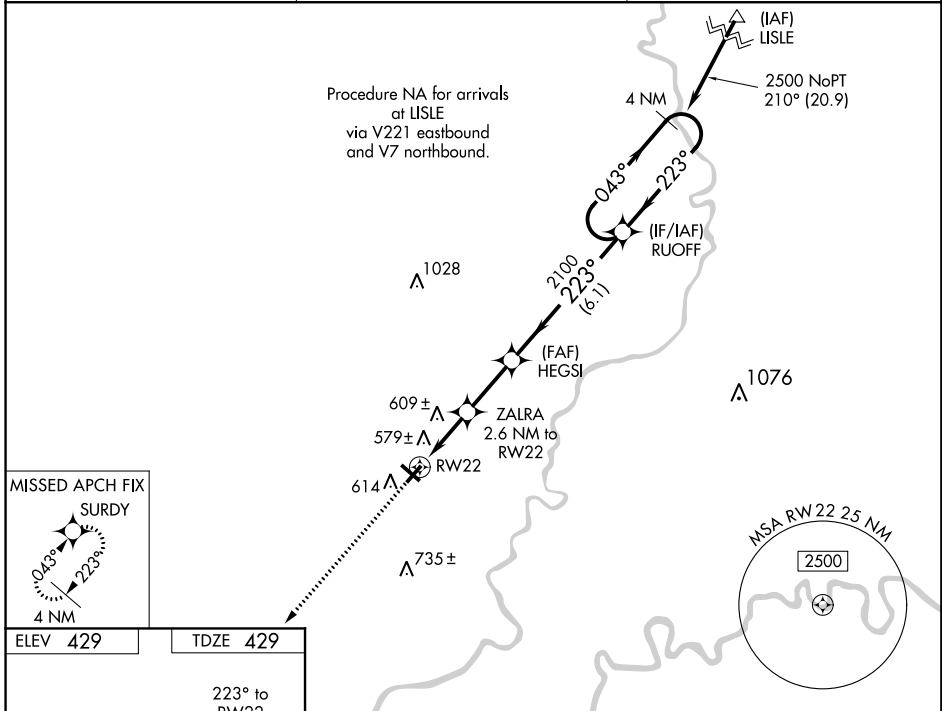
RNAV (GPS) RWY 22

MOUNT CARMEL MUNI (AJG)

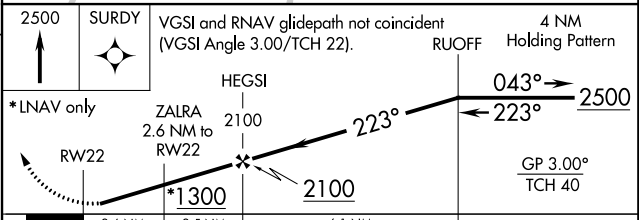
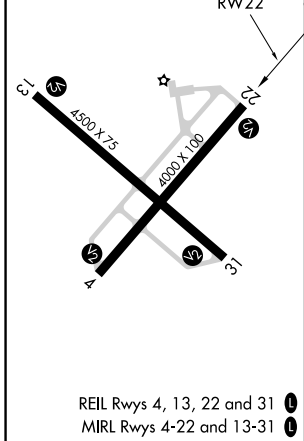
⚠ When VGSI inoperative, Straight-in/Circling Rwy 22 procedure NA at night. When VGSI inoperative, Circling Rwy 4 NA at night. Baro-VNAV NA when using Lawrenceville altimeter setting. For uncompensated Baro-VNAV systems, LNAV/VNAV NA below -15°C (5°F) or above 54°C (130°F). DME/DME RNP-0.3 NA. Visibility reduction by helicopters NA. When local altimeter setting not received, use Lawrenceville altimeter setting and increase all DA 26 feet and all MDA 40 feet.

ⓘ MISSED APPROACH: Climb to 2500 direct SURDY and hold.

AWOS-3 134.9	EVANSVILLE APP CON* 125.6 343.7	UNICOM 122.7 (CTAF) ⓘ
------------------------	---	---------------------------------



ELEV 429	TDZE 429
----------	----------



CATEGORY	A	B	C	D
LPV DA	679-1 250 (300-1)			NA
LNAV/VNAV DA	888-1¾ 459 (500-1¾)			NA
LNAV MDA	860-1	431 (500-1)	860-1¼ 431 (500-1¼)	NA
CIRCLING	980-1	551 (600-1)	980-1½ 551 (600-1½)	NA

EC-3, 04 JAN 2018 to 01 FEB 2018

EC-3, 04 JAN 2018 to 01 FEB 2018