

LOC/DME F-LVK <b>110.5</b> Chan <b>42</b>	APP CRS <b>255°</b>	Rwy Idg TDZE Apt Elev	<b>5253</b> <b>400</b> <b>400</b>
---	------------------------	-----------------------------	---

# ILS RWY 25R

LIVERMORE MUNI (L.V.K)

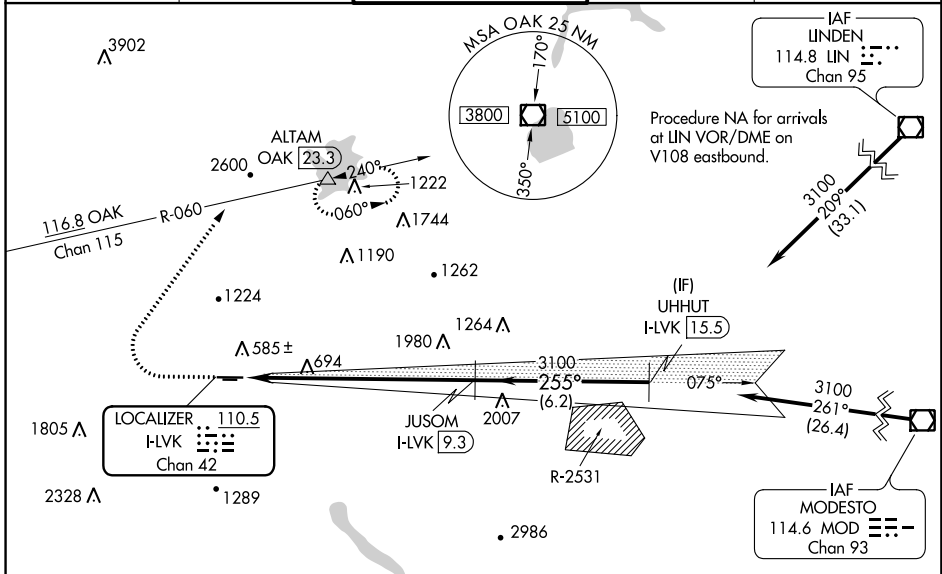
**Autopilot coupled approach NA below 1700. DME required.**

**MALSRL**

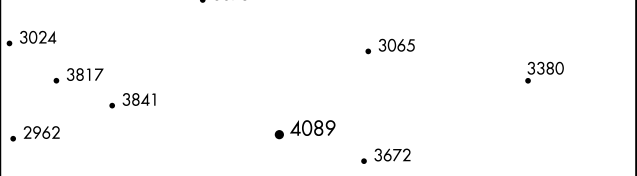
MISSED APPROACH: Climb to 1200 then climbing right turn to 5000 on heading 020° and OAK VOR/DME R-060 to ALTAM/OAK VOR/DME 23.3 DME and hold, continue climb-in-hold to 5000.

\*Missed approach requires a minimum climb of 358 feet per NM to 3600, if unable to meet climb gradient, see LOC RWY 25R.

ATIS <b>119.65</b>	NORCAL APP CON <b>123.85 278.3</b>	LIVERMORE TOWER ★ <b>118.1 (CTAF) 239.25</b>	GND CON <b>121.6</b>	UNICOM <b>122.95</b>
-----------------------	---------------------------------------	---	-------------------------	-------------------------



ELEV 400	TDZE 400
----------	----------



	1200	5000	OAK R-060	ALTAM	JUSOM I-LVK 9.3	UHHUT I-LVK 15.5
CATEGORY	A	B	C	D		
S-ILS 25R*		600-1/2	200 (200-1/2)			

SW-2, 04 JAN 2018 to 01 FEB 2018

SW-2, 04 JAN 2018 to 01 FEB 2018