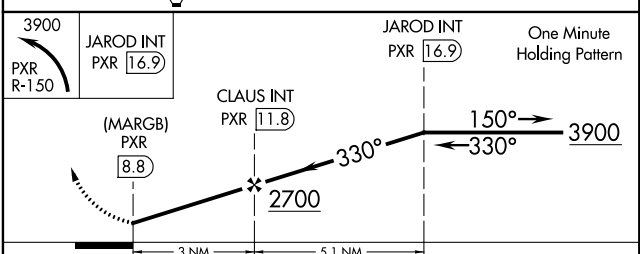
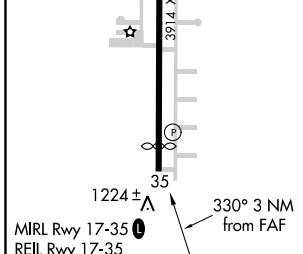
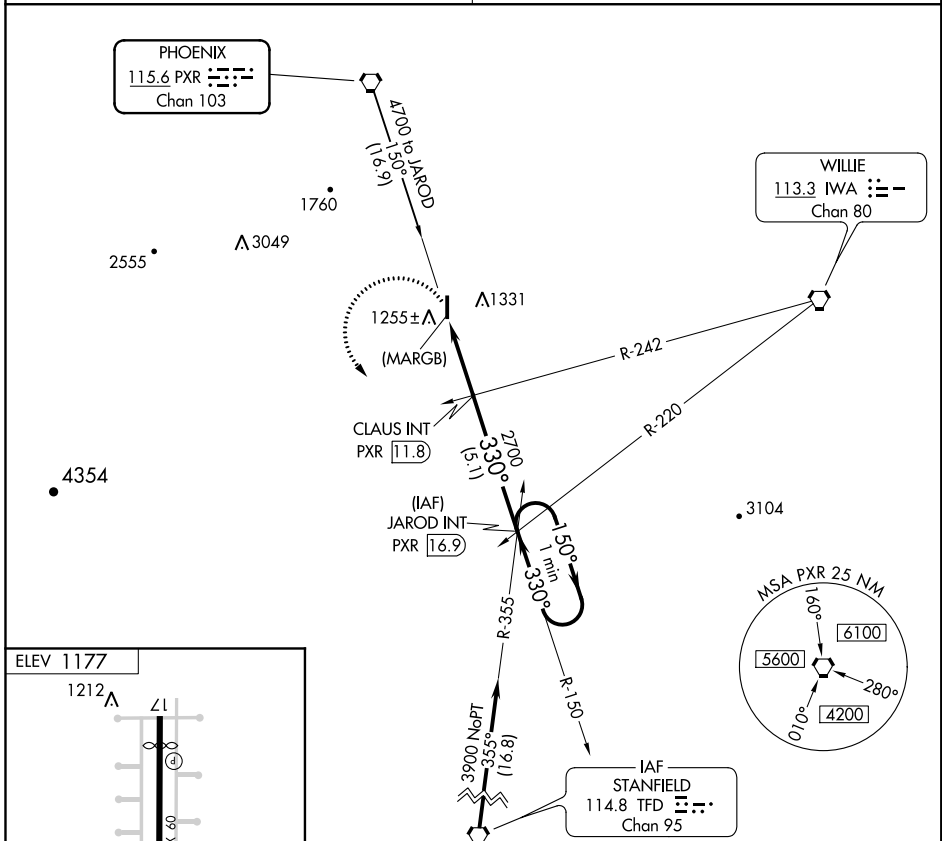


VORTAC PXR 115.6 Chan 103	APP CRS 330°	Rwy Idg TDZE Apt Elev N/A N/A 1177
---	------------------------	--

VOR or GPS-A

STELLAR AIRPARK (P19)

<p>▼ Use Phoenix Sky Harbor Intl altimeter setting. ▲ NA Procedure not authorized at night.</p>	<p>MISSED APPROACH: Climbing left turn to 3900 via PXR R-150 to JAROD Int/PXR 16.9 DME and hold.</p>
<p>PHOENIX APP CON 123.7 363.0</p>	<p>UNICOM 122.975(CTAF)</p>



FAF to MAP 3 NM		CATEGORY	A	B	C	D
Knots	60 90 120 150 180	CIRCLING	1640-1 463 (500-1)	1640-1 463 (500-1)	1640-1½ 463 (500-1½)	NA
Min:Sec	3:00 2:00 1:30 1:12 1:00					

SW-4, 04 JAN 2018 to 01 FEB 2018

SW-4, 04 JAN 2018 to 01 FEB 2018