

WAAS CH <b>77602</b> <b>W24A</b>	APP CRS <b>242°</b>	Rwy ldg TDZE Apt Elev	<b>5280</b> <b>2684</b> <b>2684</b>
--	------------------------	-----------------------------	---

# RNAV (GPS) RWY 24

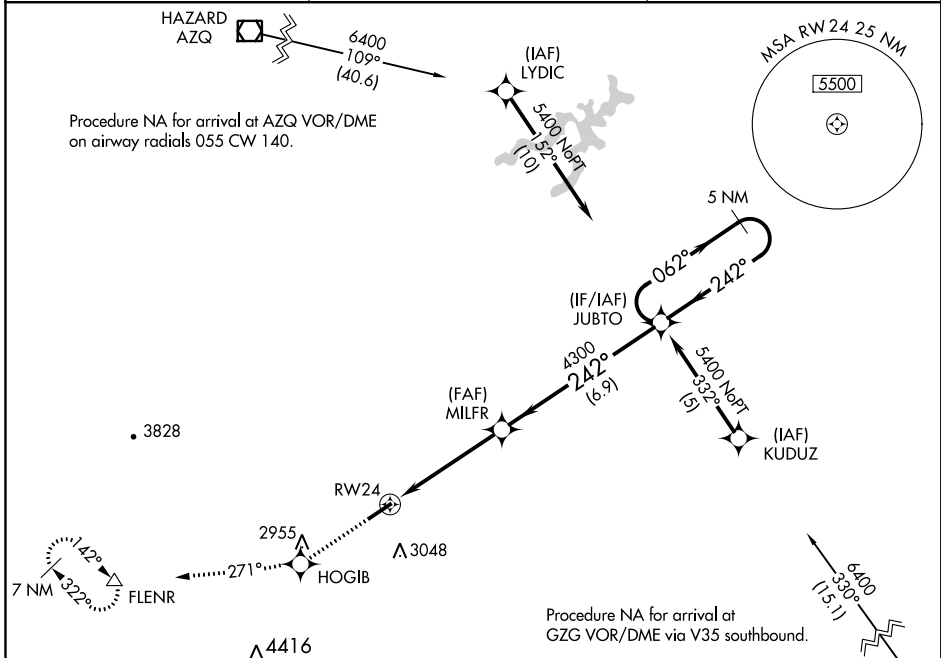
LONESOME PINE (LNP)

**⚠** Inoperative table does not apply. For uncompensated Baro-VNAV systems, LNAV/VNAV NA below -20°C (-4°F) or above 43°C (110°F).  
**⚠** DME/DME RNP-0.3 NA. Visibility reduction by helicopters NA.

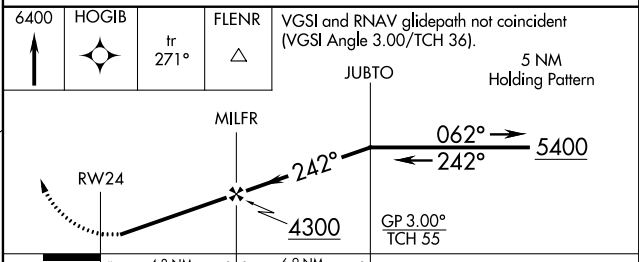
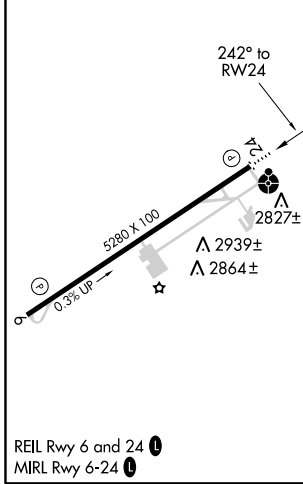
**ODALS**

**MISSED APPROACH:** Climb to 6400 direct HOGIB and via 271° track to FLENR and hold, continue climb-in-hold to 6400.

AWOS-3 <b>118.6</b>	INDIANAPOLIS CENTER <b>126.57 253.5</b>	UNICOM <b>123.0</b> (CTAF) <b>0</b>
------------------------	--	--



ELEV <b>2684</b>	TDZE <b>2684</b>
------------------	------------------



CATEGORY	A	B	C	D
LPV DA	3021 - 1¼ 337 (400-1¼)			
LNAV/VNAV DA	3126 - 1½ 442 (500-1½)			
LNAV MDA	3400 - 1	716 (800-1)	3400 - 2	3400 - 2¼ 716 (800-2¼)
CIRCLING	3440 - 1½	756 (800-1½)	3460 - 2¼ 776 (800-2¼)	3560 - 2¾ 876 (900-2¾)

NE-3, 04 JAN 2018 to 01 FEB 2018

NE-3, 04 JAN 2018 to 01 FEB 2018