

WISE, VIRGINIA

AL-5973 (FAA)

17201

LOC/DME I-OWN <b>110.7</b> Chan 44	APP CRS <b>242°</b>	Rwy Idg TDZE Apt Elev <b>5280</b> <b>2684</b> <b>2684</b>
--	------------------------	--

# LOC/DME RWY 24

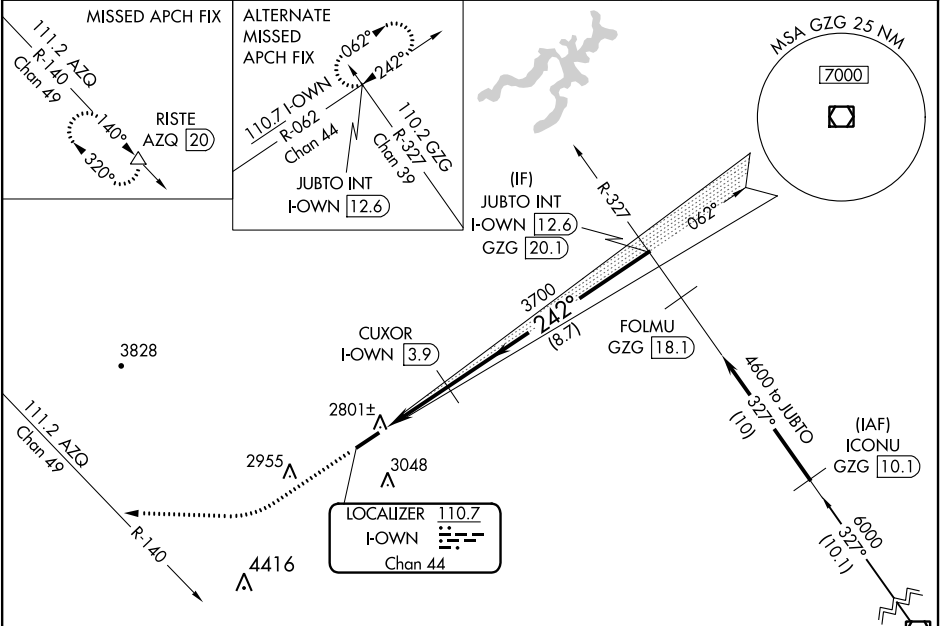
LONESOME PINE (LNP)

**Visibility reduction by helicopters NA. When local altimeter setting not received, use Virginia Highlands altimeter setting and increase all MDA 160 feet and increase S-LOC and Circling Cats C/D visibility ½ mile.**

**ODALS**

**MISSED APPROACH:** Climb to 3300 then climbing right turn to 6400 via heading 272° and AZQ VOR/DME R-140 to RISTE/AZQ 20 DME and hold.

AWOS-3 <b>118.6</b>	INDIANAPOLIS CENTER <b>126.57 253.5</b>	UNICOM <b>123.0</b> (CTAF)
------------------------	--	-------------------------------

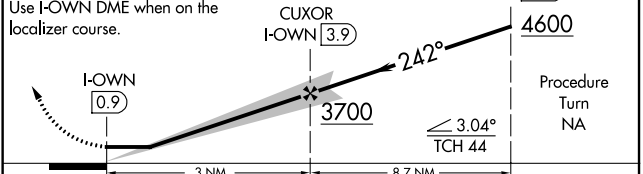
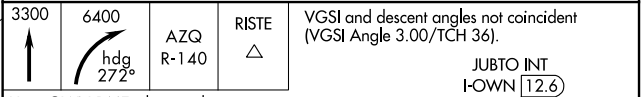


ELEV 2684	TDZE 2684
-----------	-----------

242° 3 NM from FAF

5280 x 100  
0.3% UP

2864±



CATEGORY	A	B	C	D
S-24		3060-1 376 (400-1)		3060-1½ 376 (400-1½)
CIRCLING	3140-1	456 (500-1)	3240-1½ 556 (600-1½)	3360-2¼ 676 (700-2¼)

WISE, VIRGINIA  
Orig-A 03JUN10

36°59'N - 82°32'W

# LONESOME PINE (LNP) LOC/DME RWY 24

NE-3, 04 JAN 2018 to 01 FEB 2018

NE-3, 04 JAN 2018 to 01 FEB 2018