


LOC I-UUR 111.1	APP CRS 176°	Rwy ldg TDZE Apt Elev	6500 414 425
---------------------------	------------------------	-----------------------------	---

ILS or LOC RWY 18

ROSCOE TURNER (CRX)

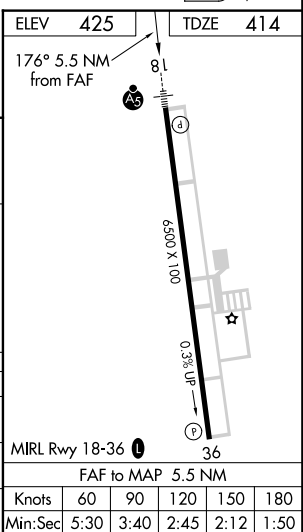
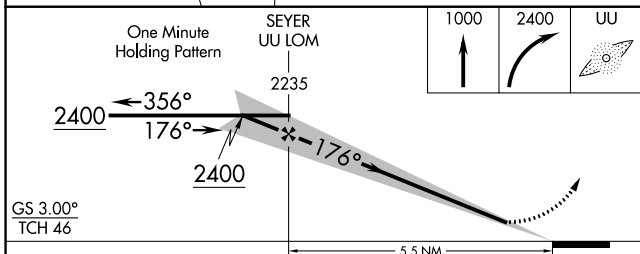
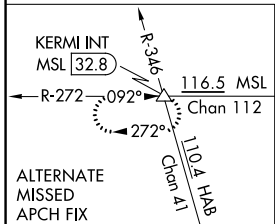
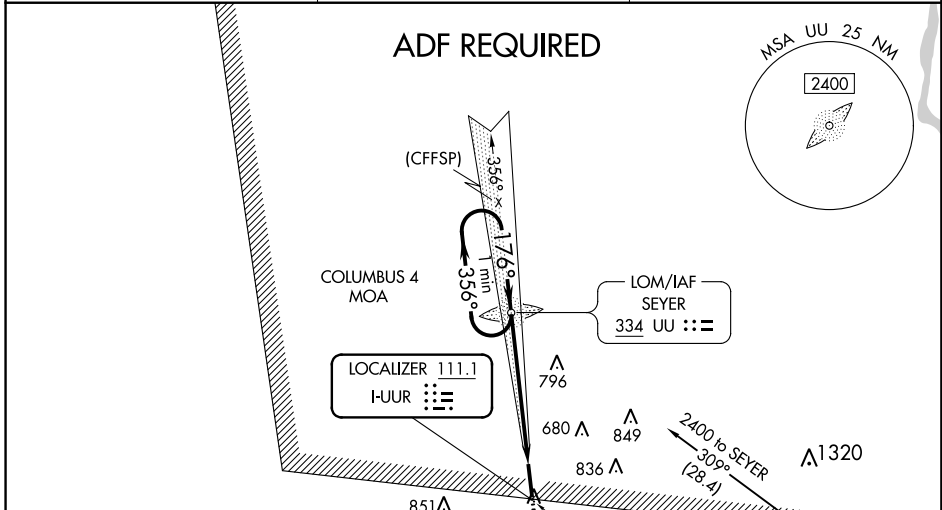
⚠ ADF required. When local altimeter setting not received, use Selmer altimeter setting and increase S-ILS 18 DA to 682 and all MDAs 80 feet and increase S-LOC 18 Cat C/D visibility to 1½ SM, Circling Cat C to 2 SM, Cat D to 2¾ SM. For inop ALS when using Selmer altimeter setting, increase S-ILS 18 all Cats visibility to ¾ SM. Autopilot coupled approach NA below 1040.

MALSR

MISSED APPROACH:
 Climb to 1000 then climbing right turn to 2400 direct UU LOM and hold.

AWOS-3
118.675

MEMPHIS CENTER
135.9 273.55

UNICOM
122.8 (CTAF) 0



CATEGORY	A	B	C	D
S-ILS 18	614-½		200 (200-½)	
S-LOC 18	1020-½	606 (600-½)	1020-1¾	606 (600-1¾)
C CIRCLING	1020-1	595 (600-1)	1080-1¾	1160-2¼
			655 (700-1¾)	735 (800-2¼)

SC-4, 04 JAN 2018 to 01 FEB 2018

SC-4, 04 JAN 2018 to 01 FEB 2018