

WAAS CH <b>42912</b> <b>W19A</b>	APP CRS <b>189°</b>	Rwy Idg <b>5000</b> TDZE <b>467</b> Apt Elev <b>473</b>
--	------------------------	---

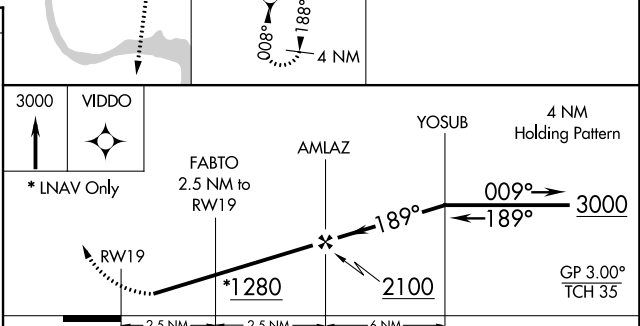
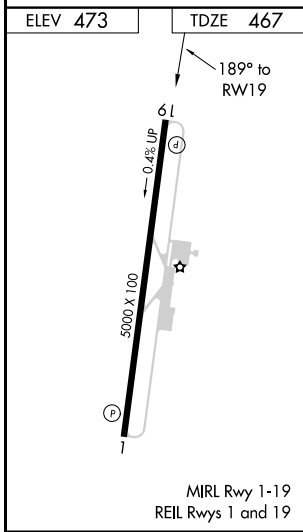
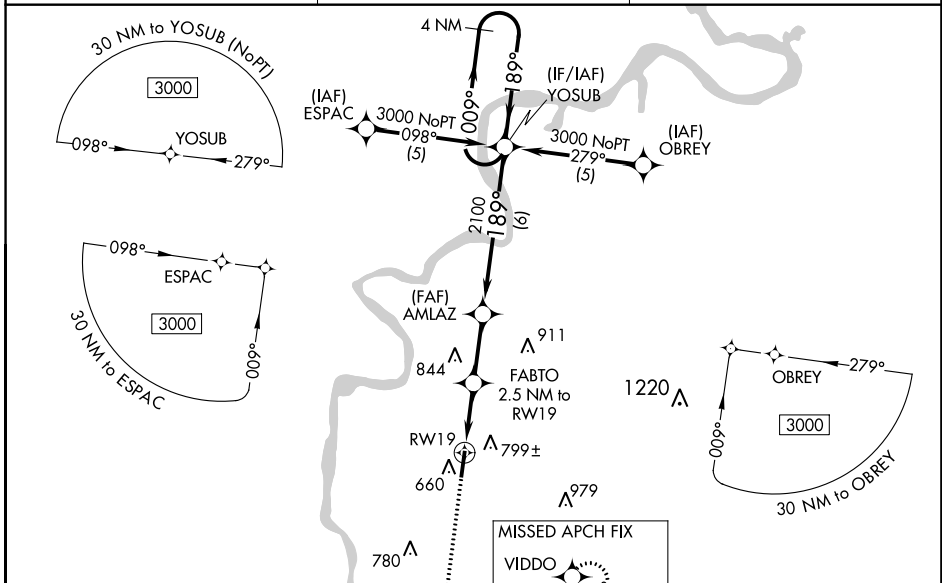
# RNAV (GPS) RWY 19

SAVANNAH-HARDIN COUNTY (SNH)

**NA** Baro-VNAV NA when using Muscle Shoals altimeter setting. For uncompensated Baro-VNAV systems, LNAV/VNAV NA below -15° C (5° F) or above 54° C (130° F). DME/DME RNP-0.3 NA. Visibility reduction by helicopters NA. When local altimeter setting not received use Muscle Shoals, AL altimeter setting and increase all DA 102 feet and all MDA 120 feet and increase LPV visibility all Cats ½ mile, LNAV/VNAV visibility all Cats ¼ mile, LNAV Cat. C visibility ½ mile, Circling Cat. B visibility ¼ mile and Circling Cat. C visibility ½ mile.

**MISSED APPROACH:**  
Climb to 3000 direct VIDDO and hold.

AWOS-3 <b>133.925</b>	MEMPHIS CENTER <b>124.35 239.3</b>	UNICOM <b>122.8 (CTAF)</b>
--------------------------	---------------------------------------	-------------------------------



CATEGORY	A	B	C	D		
LPV DA	873-1½			406 (400-1½)	NA	
LNAV/VNAV DA	999-2			532 (600-2)	NA	
LNAV MDA	1060-1	593 (600-1)		1060-1½	593 (600-1½)	NA
CIRCLING	1100-1	627 (700-1)		1100-1¾	627 (700-1¾)	NA

SE-1, 04 JAN 2018 to 01 FEB 2018

SE-1, 04 JAN 2018 to 01 FEB 2018