

NDB COQ <b>335</b>	APP CRS <b>174°</b>	Rwy Idg TDZE Apt Elev	<b>4002</b> <b>1279</b> <b>1279</b>
-----------------------	------------------------	-----------------------------	---

# NDB RWY 17

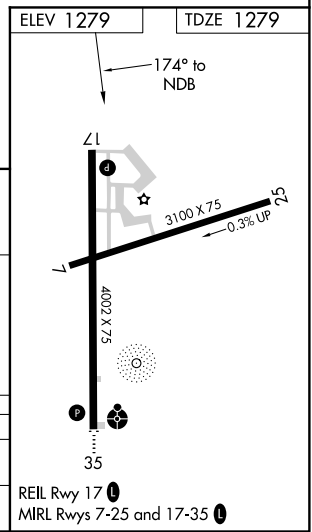
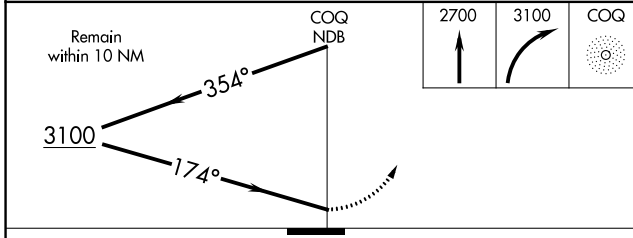
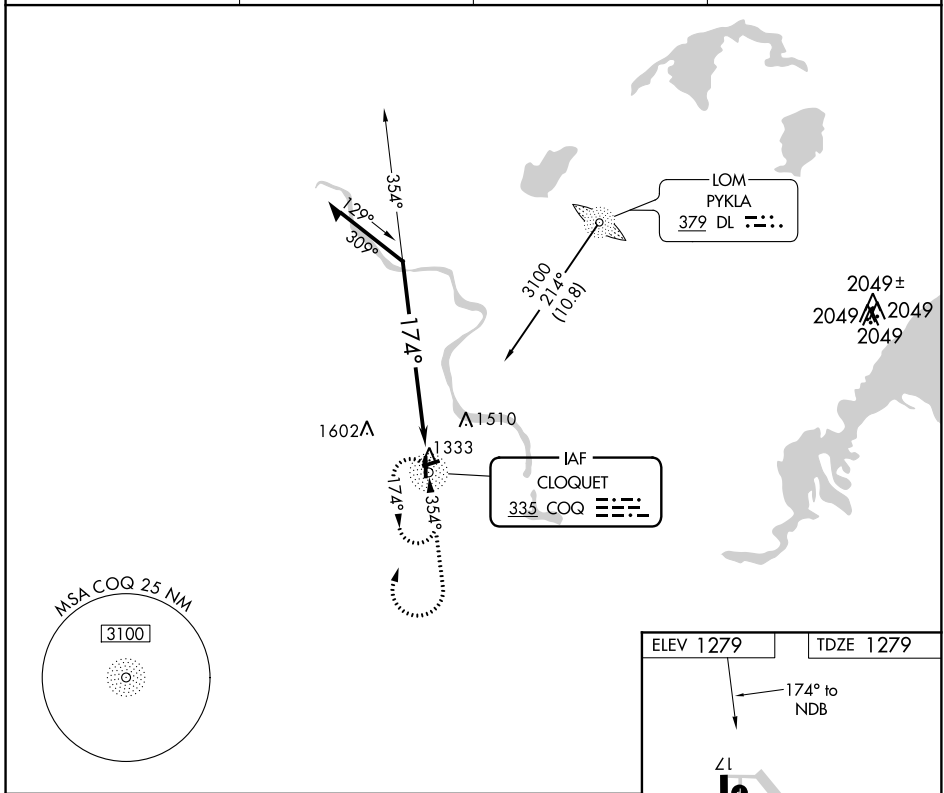
CLOQUET CARLTON COUNTY (COQ)

**▼** Helicopter visibility reduction below 3/4 SM NA. When local altimeter setting not received, use Duluth Intl altimeter setting and increase all MDA 60 feet; increase S-17 Cat B and Circling Cat B/C visibility 1/4 mile. Night landing: Rwy 7, 25 NA.

**▲ NA**

**MISSED APPROACH:** Climb to 2700 then climbing right turn to 3100 direct COQ NDB and hold.

AWOS-3 <b>118.525</b>	DULUTH APP CON <b>125.45 233.7</b>	CLNC DEL <b>122.15</b>	UNICOM <b>122.8 (CTAF)</b> <b>0</b>
--------------------------	---------------------------------------	---------------------------	--



CATEGORY	A	B	C	D
S-17	1960-1	681 (700-1)	1960-2 681 (700-2)	NA
CIRCLING	1960-1	681 (700-1)	1960-2 681 (700-2)	NA

NC-1, 04 JAN 2018 to 01 FEB 2018

NC-1, 04 JAN 2018 to 01 FEB 2018