

# EL DORADO NINE DEPARTURE

ATIS  
 128.375  
 CLNC DEL  
 119.45  
 GND CON  
 121.8 239.0  
 HOOKS TOWER★  
 127.4 354.1 (EAST)  
 118.4 (CTAF) 354.1 (WEST)  
 HOUSTON DEP CON  
 119.7 281.4

**TOP ALTITUDE:  
 ASSIGNED BY ATC**

EL DORADO  
 115.5 ELD   
 Chan 102  
 N33°15.37'-W92°44.64'  
 L-17, H-6

NOTE: RADAR required.  
 NOTE: For aircraft destined MEM  
 or filed via Q32 or J42.

LUFKIN  
 112.1 LFK   
 Chan 58

ENJOY  
 N31°16.73'  
 W94°19.82'

MUSIQ  
 N30°33.17'  
 W94°53.53'

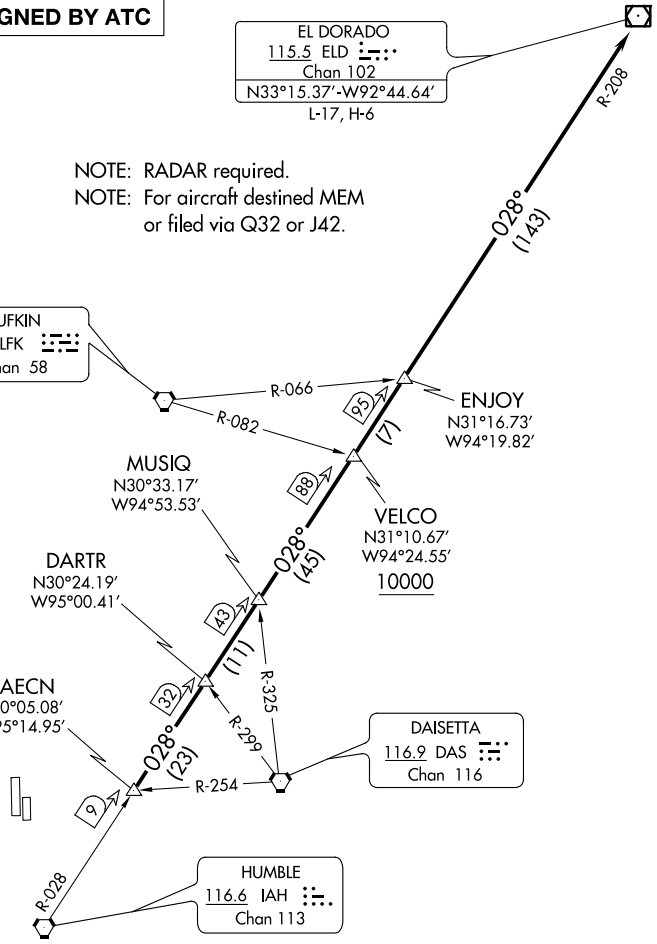
VELCO  
 N31°10.67'  
 W94°24.55'  
 10000

DARTR  
 N30°24.19'  
 W95°00.41'

RAECN  
 N30°05.08'  
 W95°14.95'

DAISETTA  
 116.9 DAS   
 Chan 116

HUMBLE  
 116.6 IAH   
 Chan 113



**TAKEOFF MINIMUMS:**  
 Rwy 17R, 35L: Standard.  
 Rwy 17L, 35R NA - environmental.  
 Waterway 17, 35 NA - air traffic.

(NOTES CONTINUED ON FOLLOWING PAGE)  
 (NARRATIVE ON FOLLOWING PAGE)

NOTE: Chart not to scale.

SC-5, 04 JAN 2018 to 01 FEB 2018

SC-5, 04 JAN 2018 to 01 FEB 2018