

| | | |
|---|------------------------|---|
| VORTAC VHP 116.3 Chan 110 | APP CRS 201° | Rwy Idg 5500 TDZE 922 Apt Elev 922 |
|---|------------------------|---|

VOR RWY 18

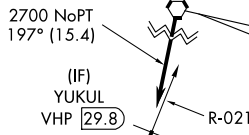
INDIANAPOLIS EXECUTIVE (TYQ)

▼ Rwy 18 helicopter visibility reduction below 3/4 SM NA. DME required. When local altimeter setting not received, use Indianapolis Intl altimeter setting and increase all MDA 80 feet and S-18 Cats C/D visibilities 1/4 mile. VDP NA when using Indianapolis Intl altimeter setting.

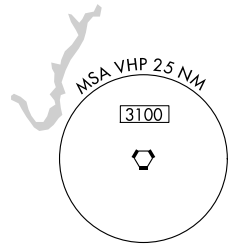
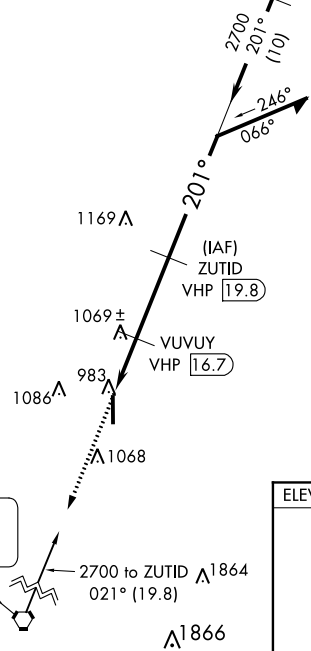
MISSED APPROACH: Climb to 2700 direct VHP VORTAC and hold.

| | | | |
|----------------------------|--|-----------------------|----------------------------------|
| AWOS-3PT 120.725 | INDIANAPOLIS APP CON 124.65 127.15 317.8 | GCO 121.725 | UNICOM 123.05 (CTAF) 0 |
|----------------------------|--|-----------------------|----------------------------------|

Procedure NA for arrivals at OKK VORTAC on V305 northbound.



IAF KOKOMO 113.5 OKK Chan 82

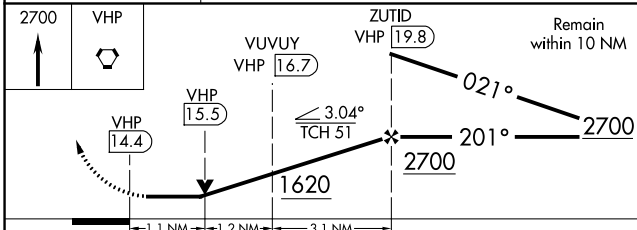


MISSED APCH FIX

BRICKYARD VHP 116.3 Chan 110

BRICKYARD 116.3 VHP Chan 110

| | |
|----------|----------|
| ELEV 922 | TDZE 922 |
|----------|----------|



| CATEGORY | A | B | C | D |
|----------|--------------------|--------------------|----------------------------|--------------------|
| S-18 | 1320-1 398 (400-1) | | 1320-1 1/8 398 (400-1 1/8) | |
| CIRCLING | 1360-1 438 (500-1) | 1380-1 458 (500-1) | 1400-1 1/2 478 (500-1 1/2) | 1480-2 558 (600-2) |

HIRL Rwy 18-36 0
REIL Rwys 18 and 36 0

EC-2, 04 JAN 2018 to 01 FEB 2018

EC-2, 04 JAN 2018 to 01 FEB 2018