

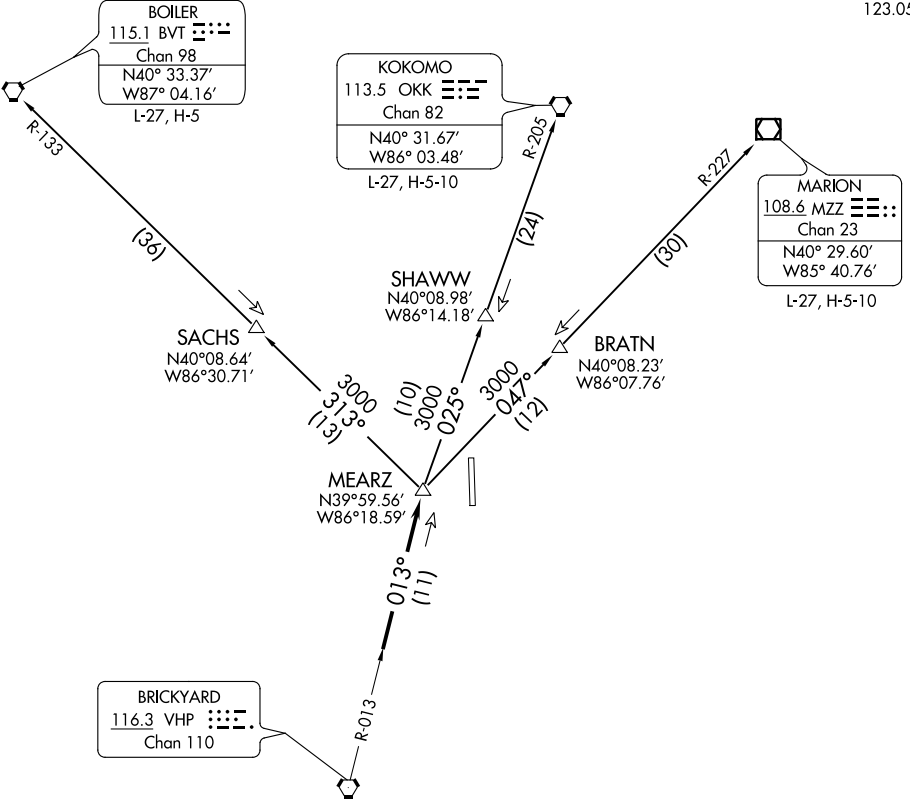
(MEARZ5.MEARZ) 17117
MEARZ FIVE DEPARTURE

AL-5438 (FAA)

INDIANAPOLIS EXECUTIVE (T'YQ)
 INDIANAPOLIS, INDIANA

**TOP ALTITUDE:
 ASSIGNED BY ATC**

AWOS-3PT
 120.725
 INDIANAPOLIS DEP CON
 124.65 127.15 317.8
 CTAF
 123.05



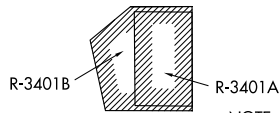
EC-2, 04 JAN 2018 to 01 FEB 2018

EC-2, 04 JAN 2018 to 01 FEB 2018

TAKEOFF MINIMUMS
 Rwy 18, 36: Standard.

- NOTE: RADAR required.
- NOTE: Select appropriate localizer/DME frequency/channel prior to departure.
- NOTE: Turbojets accelerate to 250K until reaching 10000, if unable advise ATC.
- NOTE: Assigned to aircraft with a requested altitude of 11000 or above.

(NOTES CONTINUED ON FOLLOWING PAGE)
 (NARRATIVE ON FOLLOWING PAGE)



NOTE: Chart not to scale.

MEARZ FIVE DEPARTURE
 (MEARZ5.MEARZ) 27APR17

INDIANAPOLIS, INDIANA
 INDIANAPOLIS EXECUTIVE (T'YQ)