

WAAS CH 97321 W01A	APP CRS 010°	Rwy Idg 5102 TDZE 626 Apt Elev 638
----------------------------------------	------------------------	---------------------------------------------------------------

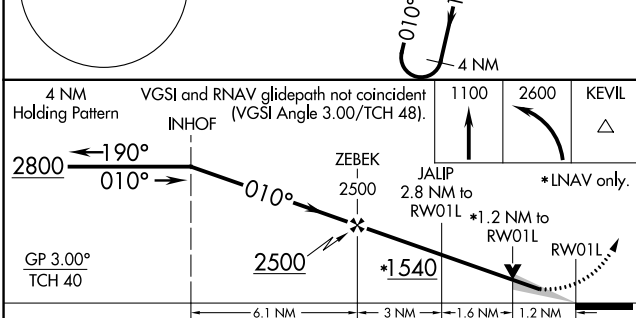
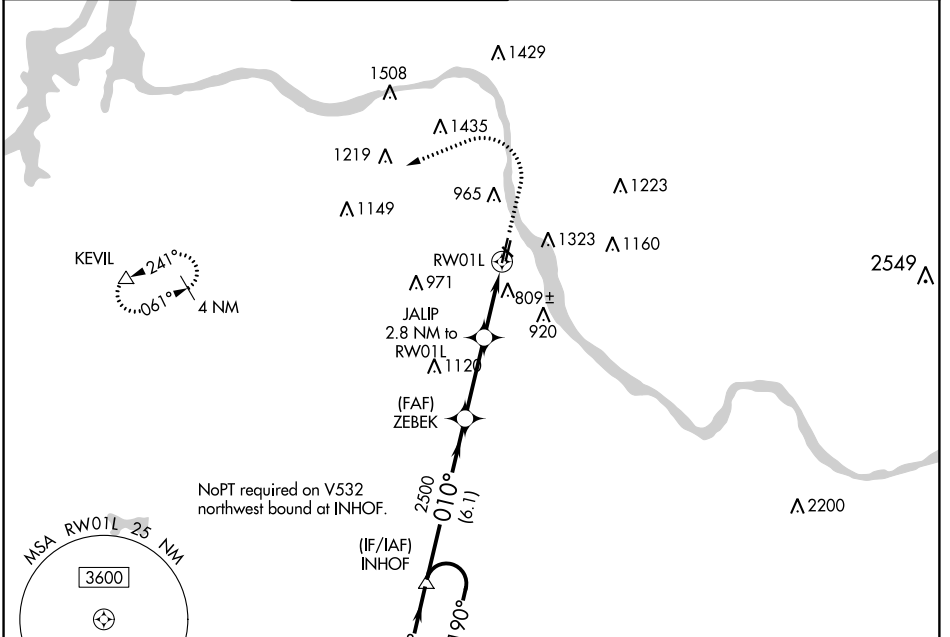
RNAV (GPS) RWY 1L

RICHARD LLOYD JONES JR (RVS)

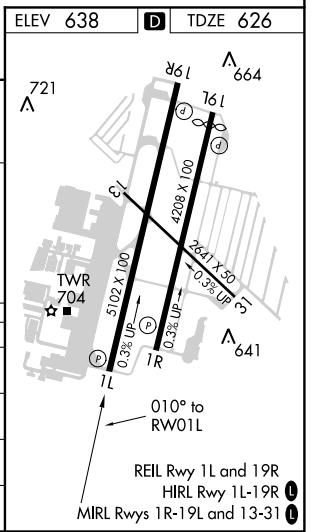
⚠ For uncompensated Baro-VNAV systems, LNAV/VNAV NA below -12°C (11°F) or above 54°C (130°F). Circling NA northeast of Rwy 31 and 19L. DME/DME RNP-0.3 NA.

⚠ MISSED APPROACH: Climb to 1100 then climbing left turn to 2600 direct KEVIL and hold.

ATIS 126.5	TULSA APP CON 134.7	RIVERSIDE TOWER ★ 120.3 (CTAF) 0	GND CON 121.7	CLNC DEL 124.5	UNICOM 122.95
----------------------	-------------------------------	---------------------------------------------------	-------------------------	--------------------------	-------------------------



CATEGORY	A	B	C	D
LPV DA	826-3/4 200 (200-3/4)			
LNAV/VNAV DA	1126-13/4 500 (500-13/4)			
LNAV MDA	1060-1	434 (500-1)	1060-1 1/4	434 (500-1 1/4)
C CIRCLING	1260-1 622 (700-1)	1280-1 642 (700-1)	1280-1 3/4 642 (700-1 3/4)	1380-2 1/2 742 (800-2 1/2)



SC-1, 04 JAN 2018 to 01 FEB 2018

SC-1, 04 JAN 2018 to 01 FEB 2018