

WAAS CH 45710 W28A	APP CRS 281°	Rwy Idg TDZE Apt Elev	3401 423 427
--	------------------------	-----------------------------	---

RNAV (GPS) RWY 28R

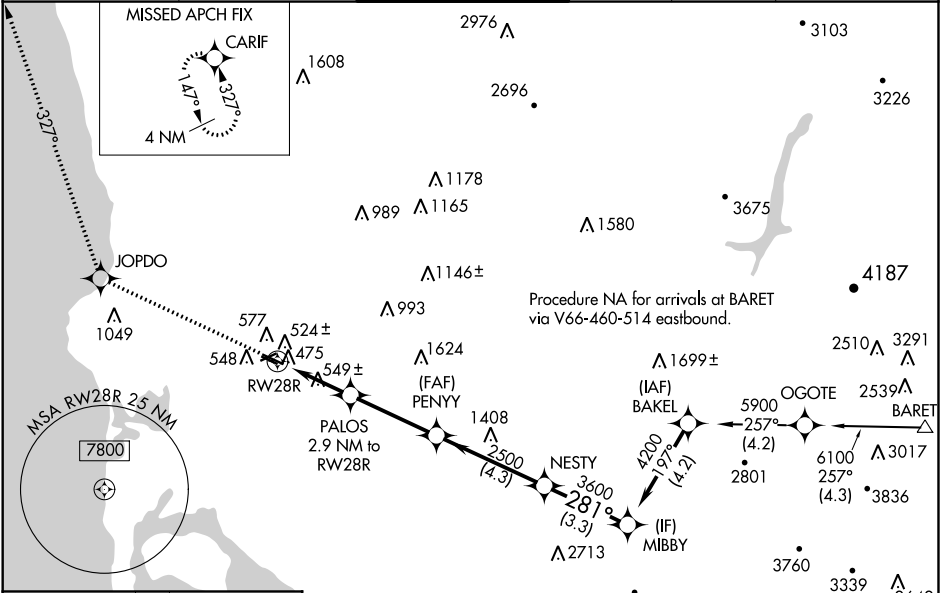
MONTGOMERY-GIBBS EXECUTIVE (MYF)

⚠ For uncompensated Baro-VNAV systems, LNAV/VNAV NA below -15°C (5°F) or above 54°C (130°F). DME/DME RNP-0.3 NA. VDP NA with San Diego Intl altimeter setting. Baro-VNAV NA when using San Diego Intl altimeter setting. When local altimeter setting not received, use San Diego Intl altimeter setting and increase all DA 71 feet and all MDA 80 feet and increase LNAV/VNAV all Cats visibility ¼ mile. For inoperative MALSRR when using San Diego Intl altimeter setting increase LPV all Cats visibility to 1 mile.

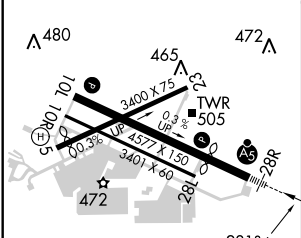
MALSRR

MISSED APPROACH:
Climb to 3000 direct JOPDO and on track 327° to CARIF and hold.

ATIS 126.9	SOCAL APP CON 124.35 279.625	MONTGOMERY TOWER * 119.2 (CTAF) 0 269.4	GND CON 118.22	CLNC DEL 123.725	SAN DIEGO RADIO 122.4
----------------------	--	---	--------------------------	----------------------------	---------------------------------



ELEV 427	TDZE 423
-----------------	-----------------



3000	JOPDO	tr 327°	CARIF	PALOS 2.9 NM to RWY28R		PENNY 2500	NESTY 3600	MIBBY 4200
*LNAV only			*1.2 NM to RWY28R	1380*		2500	281°	4200
			RWY28R		3600		GP 3.00° TCH 41	
			-1.2 NM		-1.7 NM		-3.4 NM	
					-4.3 NM		-3.3 NM	

CATEGORY		A	B	C	D
LPV DA		623-½	200 (200-½)		NA
LNAV/VNAV DA		750-¾	327 (400-¾)		NA
LNAV MDA		840-½	417 (500-½)		NA
CIRCLING		880-1	453 (500-1)		NA

SW-3, 04 JAN 2018 to 01 FEB 2018

SW-3, 04 JAN 2018 to 01 FEB 2018