

# RNAV (GPS) RWY 9

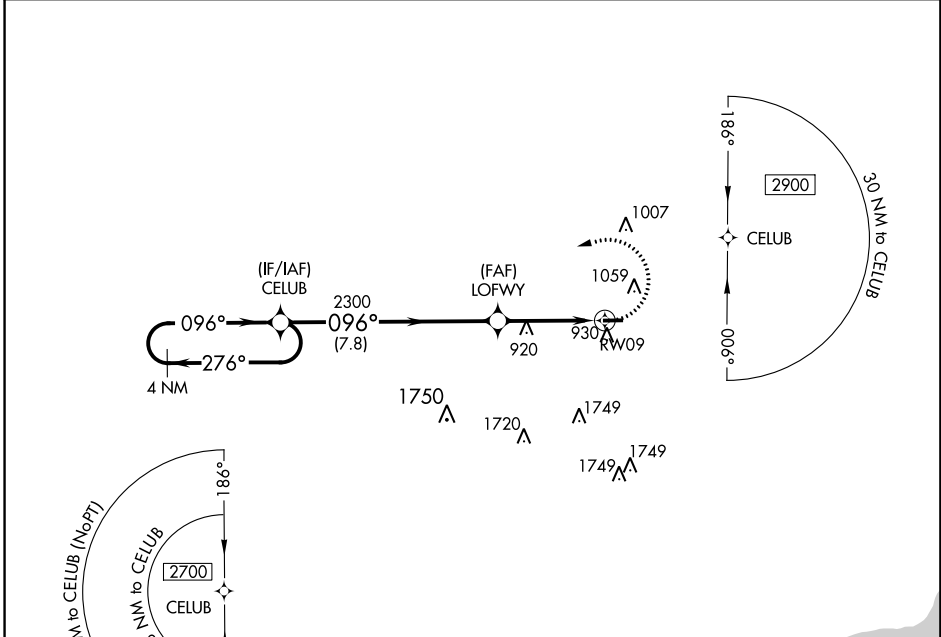
OAKLAND/TROY (VLL)

APP CRS <b>096°</b>	Rwy Idg TDZE Apt Elev	<b>3549</b> <b>727</b> <b>727</b>
------------------------	-----------------------------	---

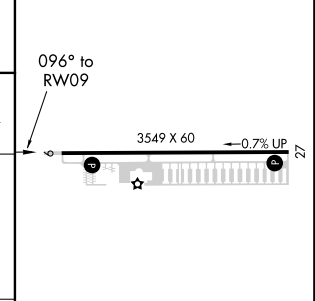
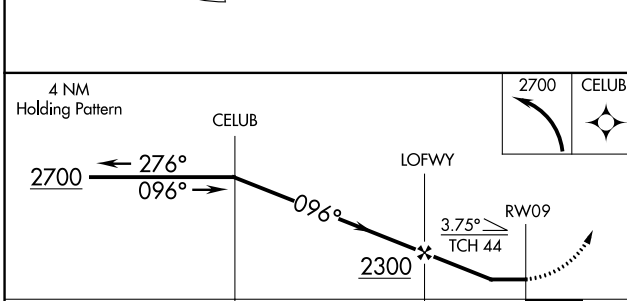
**▼** DME/DME RNP-0.3 NA. Straight-in Rwy 9 at night, operational VGSI required, remain on or above VGSI glidepath until threshold. Circling Rwy 27 NA at night. Rwy 9 helicopter visibility reduction below 1 SM NA.

**MISSED APPROACH:**  
Climbing left turn to 2700  
direct CELUB and hold.

AWOS-3 <b>119.475</b>	DETROIT APP CON <b>126.85 363.2</b>	UNICOM <b>123.05 (CTAF) ①</b>
--------------------------	--	----------------------------------



ELEV 727	TDZE 727
----------	----------



CATEGORY	A	B	C	D
LNNAV MDA	1220-1	493 (500-1)	1220-1 <sup>3</sup> / <sub>8</sub> 493 (500-1 <sup>3</sup> / <sub>8</sub> )	NA
<b>C</b> CIRCLING	1400-1	673 (700-1)	1400-2 673 (700-2)	NA

MIRL Rwy 9-27 ①

EC-1, 04 JAN 2018 to 01 FEB 2018

EC-1, 04 JAN 2018 to 01 FEB 2018