

RNAV (GPS) RWY 6

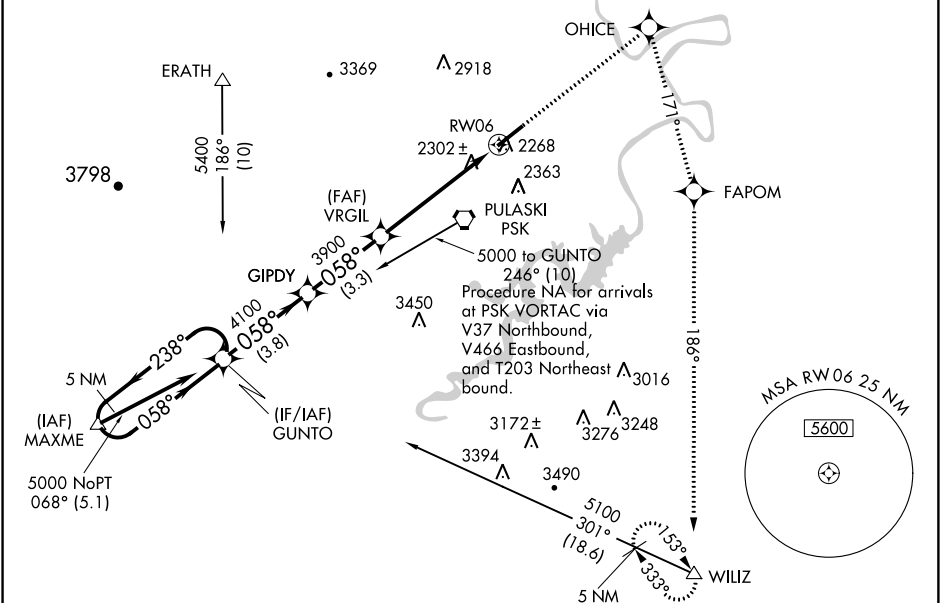
NEW RIVER VALLEY (PSK)

WAAS CH 87015 W06A	APP CRS 058°	Rwy Idg TDZE Apt Elev	6201 2105 2105
--	------------------------	-----------------------------	---

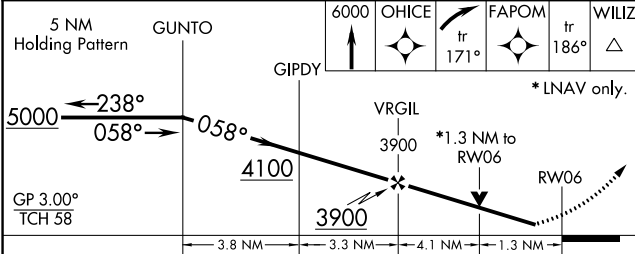
For uncompensated Baro-VNAV systems, LNAV/VNAV NA below -19°C (-2°F) or above 44°C (111°F). DME/DME RNP-0.3 NA. Visibility reduction by helicopters NA.
 ▼ When local altimeter setting not received, use Blacksburg altimeter setting and increase all DA 36 feet, and all MDA 40 feet. VDP and Baro-VNAV NA when using Blacksburg altimeter setting. Inoperative table does not apply to LPV all Cats and LNAV Cats. A and B. For inoperative MALSRS, increase LNAV Cat C visibility to 1 1/4 mile.

MALSRS
 MISSED APPROACH: Climb to 6000 direct OHICE and right turn via track 171° to FAPOM and via track 186° to WILIZ and hold.

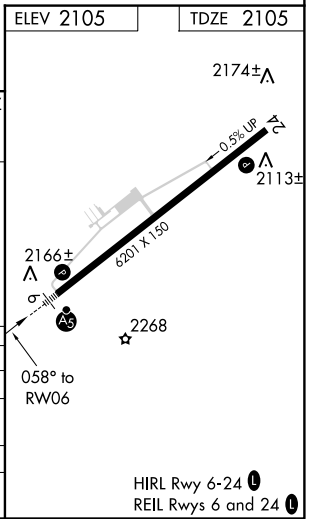
AWOS-3 127.375	ROANOKE APP CON 126.0 339.8	ROANOKE CLNC DEL 121.7	UNICOM 122.7 (CTAF)
--------------------------	---------------------------------------	----------------------------------	-------------------------------



ELEV 2105	TDZE 2105
-----------	-----------



CATEGORY	A	B	C	D
LPV DA		2305-1	200 (200-1)	
LNAV/ VNAV DA		2597-1 1/4	492 (500-1 1/4)	
LNAV MDA		2560-1	455 (500-1)	
CIRCLING	2620-1	515 (600-1)	2620-1 1/2 515 (600-1 1/2)	2680-2 575 (600-2)



NE-3, 04 JAN 2018 to 01 FEB 2018

NE-3, 04 JAN 2018 to 01 FEB 2018