

WAAS CH 86227 W24A	APP CRS 238°	Rwy Idg TDZE Apt Elev	6201 2087 2105
----------------------------------------	------------------------	-----------------------------	-------------------------------------------

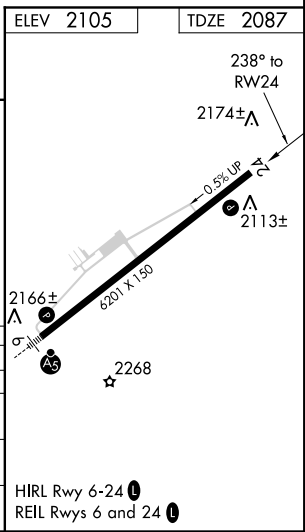
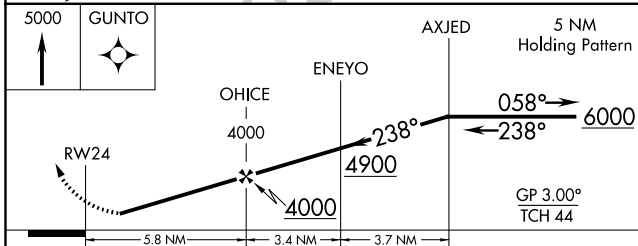
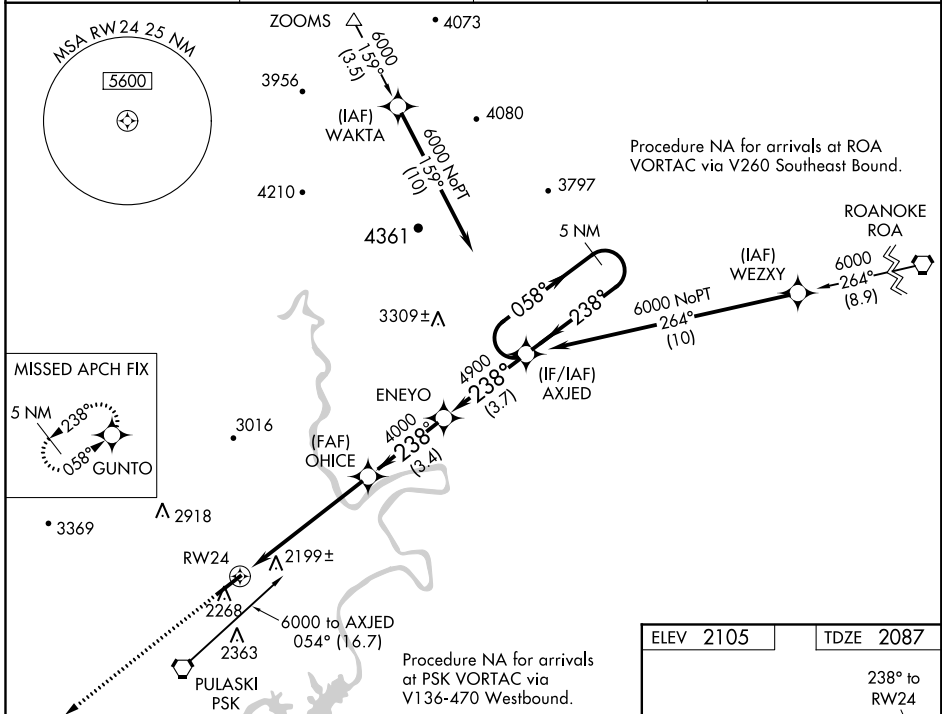
RNAV (GPS) RWY 24

NEW RIVER VALLEY (PSK)

Baro-VNAV NA when using Blacksburg altimeter setting. For uncompensated Baro-VNAV systems, LNAV/VNAV NA below -19°C (-2°F) or above 45°C (113°F). DME/DME RNP-0.3 NA. Visibility reduction by helicopters NA. When local altimeter setting not received, use Blacksburg altimeter setting and increase all DA 36 feet, and all MDA 40 feet; increase LNAV/VNAV all Cats. and LNAV Cat. C visibility ¼ mile.

MISSED APPROACH:
Climb to 5000 direct GUNTO and hold.

AWOS-3 127.375	ROANOKE APP CON 126.0 339.8	ROANOKE CLNC DEL 121.7	UNICOM 122.7 (CTAF) 0
--------------------------	---------------------------------------	----------------------------------	---------------------------------



CATEGORY	A	B	C	D
LPV DA	2337-1 250 (300-1)			
LNAV/VNAV DA	2502-1½ 415 (400-1½)			
LNAV MDA	2460-1 373 (400-1)		2460-1¼ 373 (400-1¼)	
CIRCLING	2620-1 515 (600-1)		2620-1½ 2680-2 575 (600-2)	

NE-3, 04 JAN 2018 to 01 FEB 2018

NE-3, 04 JAN 2018 to 01 FEB 2018