

LOC I-PSK	APP CRS	Rwy Idg	6201
110.9	058°	TDZE	2105
		Apt Elev	2105

ILS or LOC Y RWY 6

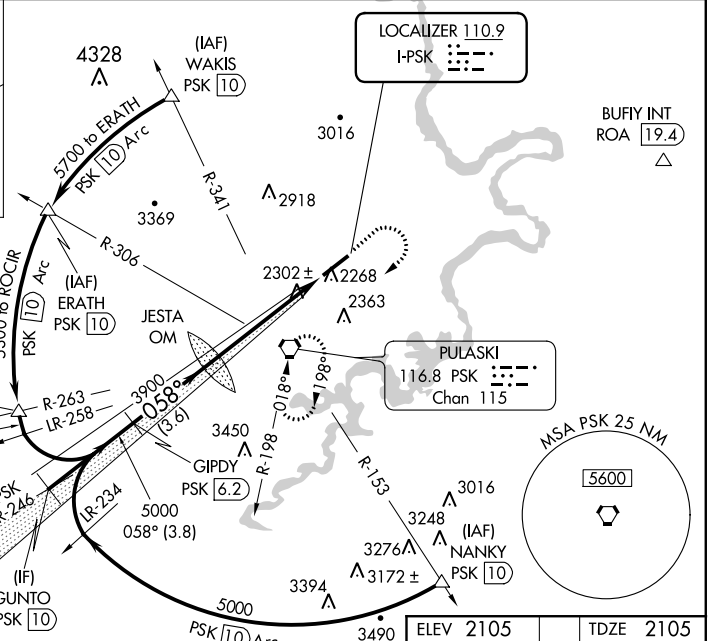
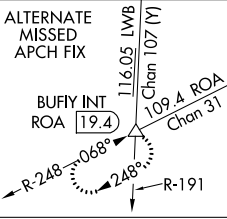
NEW RIVER VALLEY (PSK)

NA DME Required. Visibility reduction by helicopters NA. When local altimeter setting not received, use Blacksburg altimeter setting and increase all DA 36 feet, and all MDA 40 feet. Inoperative table does not apply to S-ILS 6 all Cats and S-LOC 6 Cats A and B. For inoperative MALSR, increase S-LOC 6 Cat C visibility to 1¼ mile.



MISSED APPROACH: Climb to 3000 then climbing right turn to 5000 direct PSK VORTAC and hold.

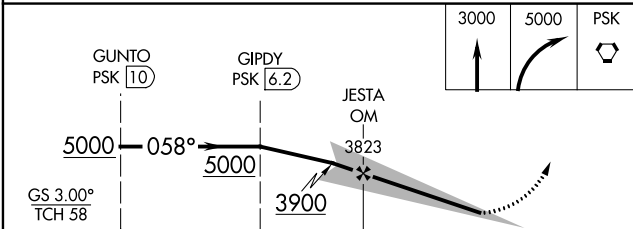
AWOS-3 127.375	ROANOKE APP CON 126.0 339.8	ROANOKE CLNC DEL 121.7	UNICOM 122.7 (CTAF) 0
--------------------------	---------------------------------------	----------------------------------	---------------------------------



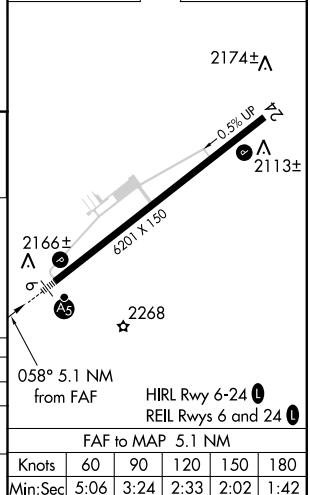
NE-3, 04 JAN 2018 to 01 FEB 2018

NE-3, 04 JAN 2018 to 01 FEB 2018

DME REQUIRED



ELEV 2105	TDZE 2105
-----------	-----------



CATEGORY	A	B	C	D
S-ILS 6		2305-1	200 (200-1)	
S-LOC 6		2560-1	455 (500-1)	
CIRCLING	2620-1	515 (600-1)	2620-1½ 515 (600-1½)	2680-2 575 (600-2)

	Knots	60	90	120	150	180
FAF to MAP 5.1 NM	Min:Sec	5:06	3:24	2:33	2:02	1:42