

LOC/DME I-MKL <b>109.1</b> Chan <b>28</b>	APP CRS <b>023°</b>	Rwy Idg <b>6006</b> TDZE <b>434</b> Apt Elev <b>434</b>
---	------------------------	---

# ILS or LOC RWY 2

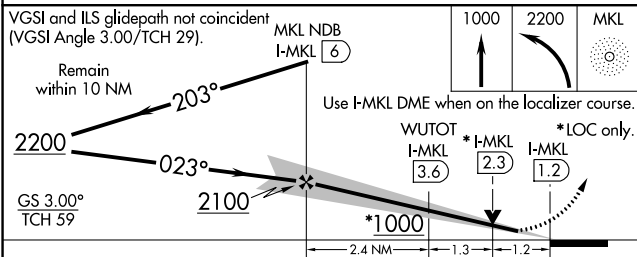
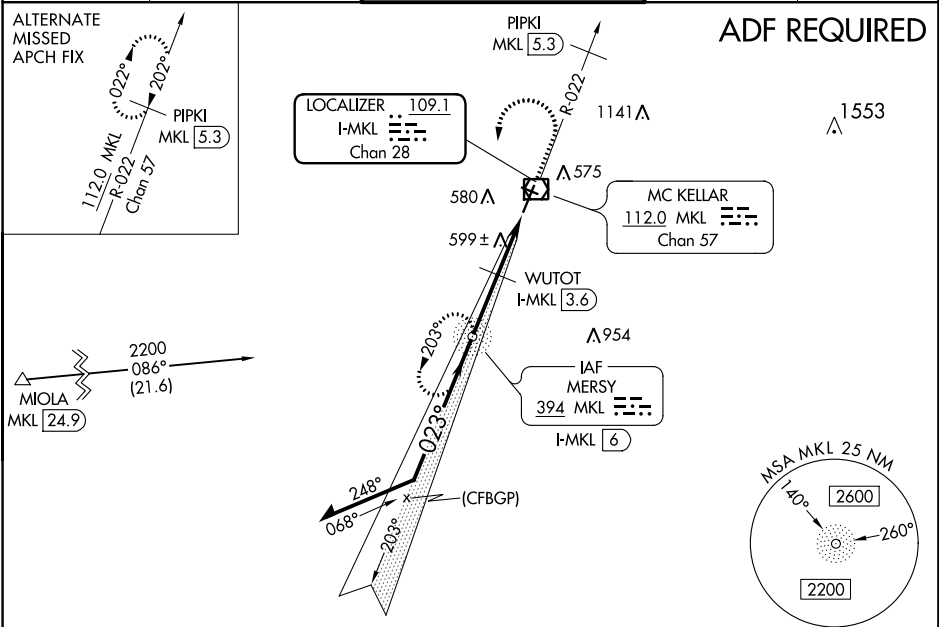
MCKELLAR-SIPES RGNL (MKL)

**⚠** Circling Rwy 29 NA at night. Autopilot coupled approach NA below 1100. ADF required. For inop ALS, increase S-LOC 2 and WUTOT fix minimums Cats C/D visibility 3/8 SM.

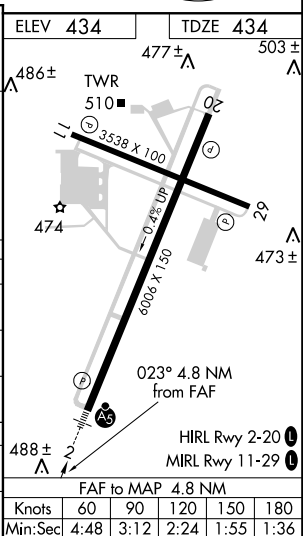
MALS R

MISSED APPROACH: Climb to 1000 then climbing left turn to 2200 direct MKL NDB and hold.

ASOS <b>119.325</b>	MEMPHIS CENTER <b>134.65 316.15</b>	JACKSON TOWER ★ <b>127.15 (CTAF) 0 249.95</b>	GND CON <b>120.9</b>	UNICOM <b>122.95</b>
------------------------	--	--	-------------------------	-------------------------



CATEGORY	A	B	C	D
S-ILS 2	634-1/2 200 (200-1/2)			
S-LOC 2	1000-1/2	566 (600-1/2)	1000-1 1/4	566 (600-1 1/4)
<b>C</b> CIRCLING	1000-1	566 (600-1)	1000-1 5/8	1080-2
WUTOT FIX MINIMUMS				
S-LOC 2	840-1/2	406 (500-1/2)	840-3/4	406 (500-3/4)
<b>C</b> CIRCLING	900-1	920-1	960-1 1/2	1080-2
	466 (500-1)	486 (500-1)	526 (600-1/2)	646 (700-2)



SE-1, 04 JAN 2018 to 01 FEB 2018

SE-1, 04 JAN 2018 to 01 FEB 2018