

VORTAC PSI <b>111.0</b> Chan <b>47</b>	APP CRS <b>119°</b>	Rwy Idg <b>6520</b> TDZE <b>980</b> Apt Elev <b>980</b>
--	------------------------	---

# VOR RWY 9R

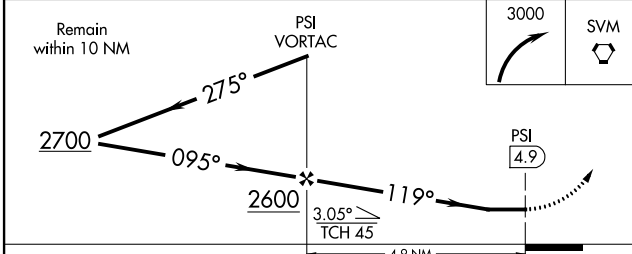
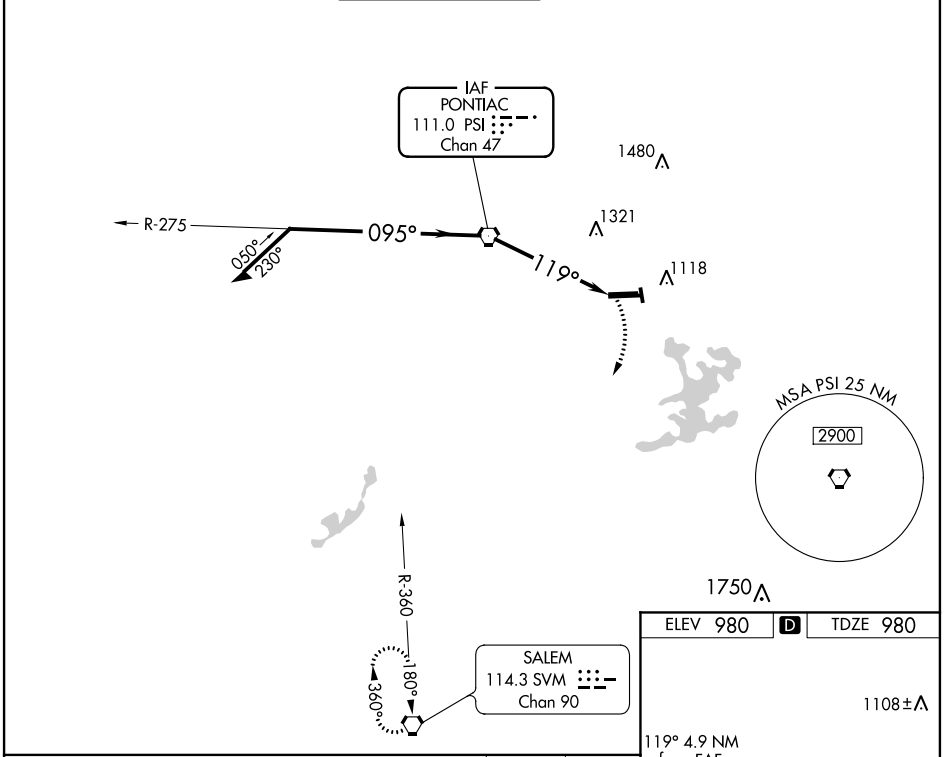
OAKLAND COUNTY INTL (P'TK)

**⚠** Inoperative table does not apply. Visibility reduction by helicopters NA.  
**⚠** When local altimeter setting not received, use Coleman A Young Muni altimeter setting and increase all MDA 120 feet, increase S-9R Cat C/D and Circling Cat C visibility 1/4 mile and Circling Cat D visibility 1/2 mile. Inoperative table does not apply, when using Coleman A Young Muni altimeter setting.



**MISSED APPROACH:**  
Climbing right turn to 3000 direct SVM VORTAC and hold.

ATIS <b>125.025</b>	DETROIT APP CON <b>127.5 363.2</b>	PONTIAC TOWER * <b>120.5 (CTAF) 0</b>	GND CON <b>121.9</b>	CLNC DEL <b>118.25</b>	UNICOM <b>122.95</b>
------------------------	---------------------------------------	--	-------------------------	---------------------------	-------------------------



ELEV 980	TDZE 980
----------	----------

1108 ± A

1066 ± A

1018 ± A

1024 ± A

1029 ± A

1042 ± A

119° 4.9 NM from FAF

5676 X 100

6521 X 150

TWR 1037

HIRL Rwy 9R-27L

MIRL Rwy 9L-27R

REIL Rwys 9L and 27R

REIL Rwy 27L

FAF to MAP 4.9 NM

Knots	60	90	120	150	180
Min:Sec	4:54	3:16	2:27	1:58	1:38

CATEGORY	A	B	C	D
S-9R	1600/50	620 (700-1)	1600-1 3/4 620 (700-1 3/4)	1600-2 620 (700-2)
CIRCLING	1600-1	620 (700-1)	1600-1 3/4 620 (700-1 3/4)	1640-2 660 (700-2)

EC-1, 04 JAN 2018 to 01 FEB 2018

EC-1, 04 JAN 2018 to 01 FEB 2018