

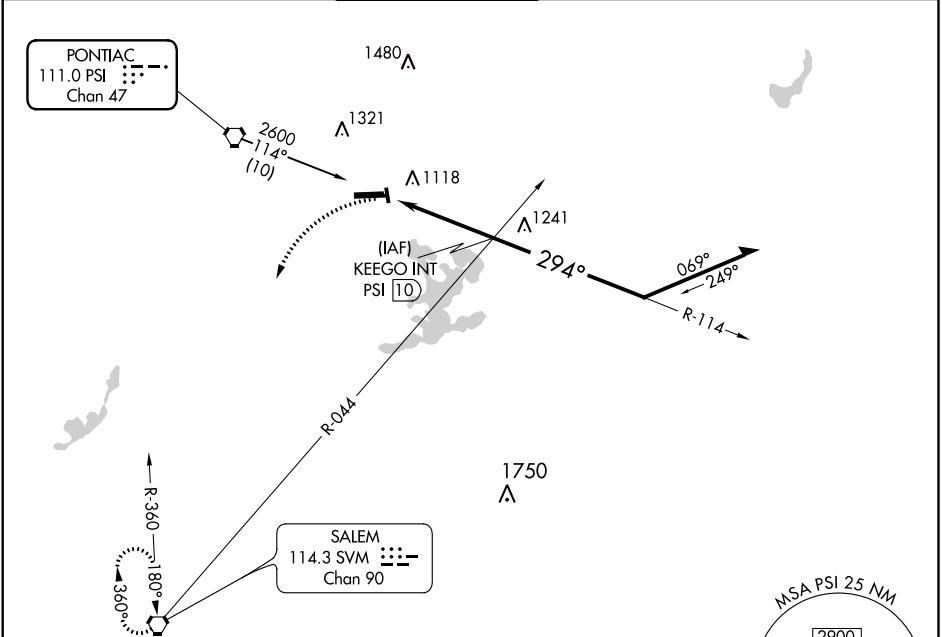
VORTAC PSI 111.0 Chan 47	APP CRS 294°	Rwy Idg TDZE Apt Elev	6520 974 980
--	------------------------	-----------------------------	---

VOR RWY 27L
OAKLAND COUNTY INTL (PTK)

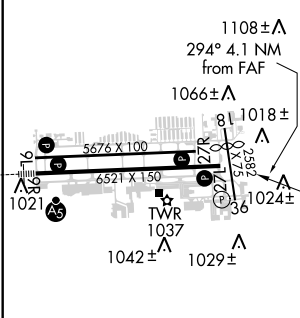
⚠ Visibility reduction by helicopters NA. When local altimeter setting not received, use Coleman A Young Muni altimeter setting and increase all MDA 120 feet, increase S-27L Cat C/D and Circling Cat C/D visibility 1/2 mile.

MISSED APPROACH: Climbing left turn to 3000 direct SVM VORTAC and hold.

ATIS 125.025	DETROIT APP CON 127.5 363.2	PONTIAC TOWER * 120.5 (CTAF) 0	GND CON 121.9	CLNC DEL 118.25	UNICOM 122.95
------------------------	---------------------------------------	--	-------------------------	---------------------------	-------------------------



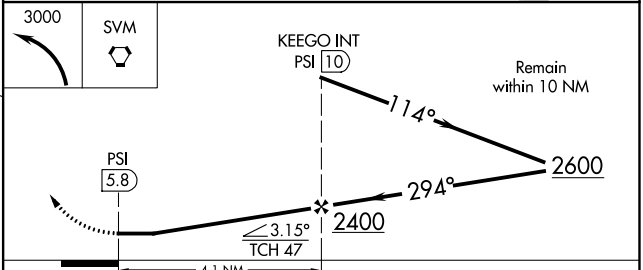
ELEV 980	D	TDZE 974
----------	----------	----------



HIRL Rwy 9R-27L **ⓧ**
MIRL Rwy 9L-27R **ⓧ**
REIL Rwy 9L and 27R **ⓧ**
REIL Rwy 27L **ⓧ**

FAF to MAP 4.1 NM

Knots	60	90	120	150	180
Min:Sec	4:06	2:44	2:03	1:38	1:22



CATEGORY	A	B	C	D
S-27L	1460-1	486 (500-1)	1460-1 1/4 486 (500-1 1/4)	1460-1 1/2 486 (500-1 1/2)
CIRCLING	1500-1 520 (600-1)	1520-1 540 (600-1)	1560-1 1/2 580 (600-1 1/2)	1640-2 660 (700-2)

EC-1, 04 JAN 2018 to 01 FEB 2018

EC-1, 04 JAN 2018 to 01 FEB 2018