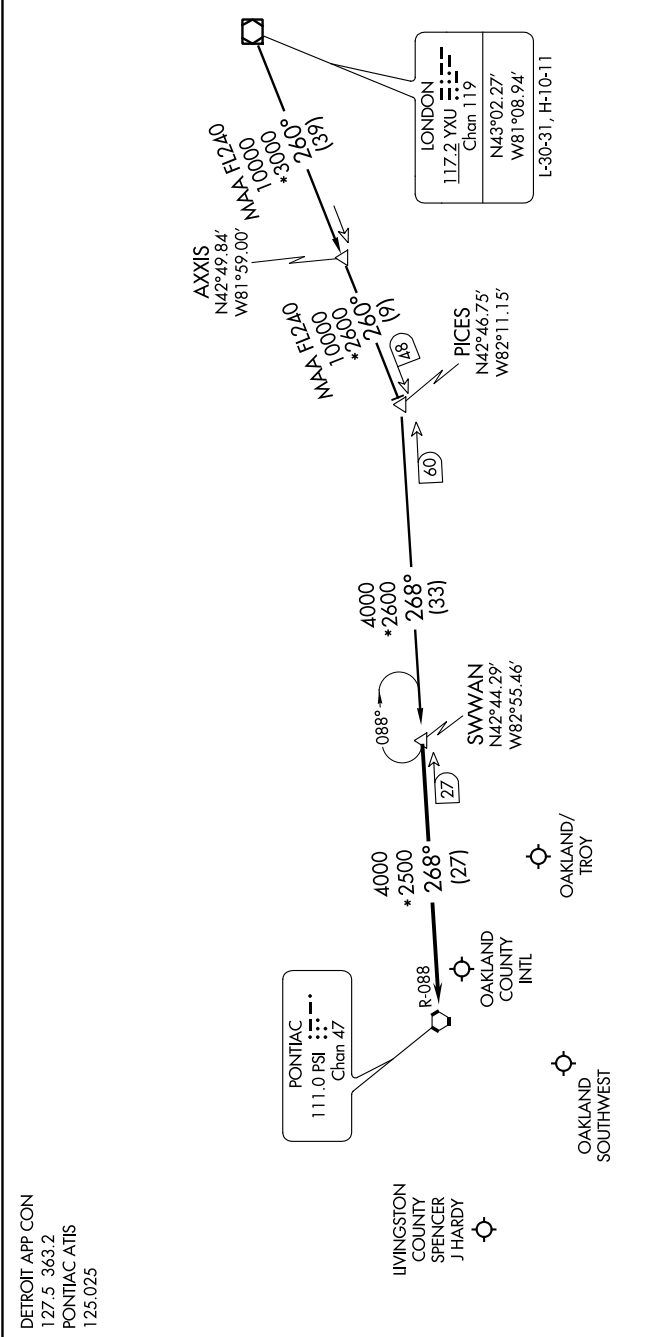


EC-1, 04 JAN 2018 to 01 FEB 2018



ARRIVAL ROUTE DESCRIPTION

AXIS TRANSITION (AXIS.SWWAN2): From over **AXIS INT** via **YXU R-260** to **PICES**, then via **PSI R-088** to **SWWAN**. Thence....

LONDON TRANSITION (YXU.SWWAN2): From over **YXU VORTAC** via **YXU R-260** to **PICES**, then via **PSI R-088** to **SWWAN**. Thence....

....From **SWWAN** on **PSI R-088** to **PSI VORTAC**. Expect radar vectors to final approach course from **Detroit** approach control.



NOTE: DME required.
 NOTE: Radar required.
 NOTE: Chart not to scale.

EC-1, 04 JAN 2018 to 01 FEB 2018