

# ST. CLAIR ONE DEPARTURE

AL-5052 (FAA)

OAKLAND COUNTY INTL (PTK)  
PONTIAC, MICHIGAN

EC-1, 04 JAN 2018 to 01 FEB 2018

**TOP ALTITUDE:  
ASSIGNED BY ATC**

**TAKEOFF MINIMUMS:**

Rwys 18, 36: NA - Environmental.  
Rwys 9L/R, 27L/R: Standard.

NOTE: RADAR required.  
NOTE: DME required.

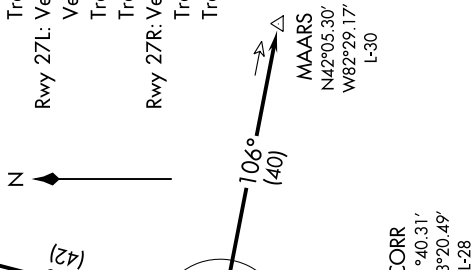
**PONTIAC**  
111.0 PSI  
Chan 47

**PISTN**  
N42°53.54'  
W83°08.19'  
L-28

**SPRNT**  
N42°42.52'  
W84°00.23'  
L-28

**RUZZL**  
N41°52.50'  
W83°57.31'  
L-28

**DETROIT**  
113.4 DXO  
Chan 81  
N42°12.79'-W83°22.00'  
L-28, H+10



### TAKEOFF OBSTACLE NOTES:

- Rwy 9L:** Hangars beginning 203' from DER, 510' left of centerline, up to 30' AGL/1000' MSL.  
Trees beginning 3347' from DER, 1252' left of centerline, up to 100' AGL/1089' MSL.
- Rwy 9R:** Antenna on hangar 870' from DER, 732' right of centerline, 36' AGL/1006' MSL.  
Trees beginning 1136' from DER, 480' right of centerline, up to 100' AGL/1079' MSL.  
Trees beginning 1383' from DER, 646' left of centerline, up to 41' AGL/1011' MSL.
- Rwy 27L:** Vehicle on road 401' from DER, 539' left of centerline, 15' AGL/991' MSL.  
Vehicle on road 417' from DER, 574' right of centerline, 15' AGL/992' MSL.  
Trees beginning 452' from DER, 552' right of centerline, up to 23' AGL/1002' MSL.  
Trees beginning 565' from DER, 521' left of centerline, up to 76' AGL/1046' MSL.
- Rwy 27R:** Vehicle on road 416' from DER, 24' right of centerline, 15' AGL/992' MSL.  
Trees beginning 451' from DER, 2' right of centerline, up to 62' AGL/1041' MSL.  
Trees beginning 1234' from DER, 19' left of centerline, up to 36' AGL/1015' MSL.

ATIS 125.025  
CLNC DEL 118.25  
GND CON 121.9  
CTAF 120.5

**SPECIAL INSTRUCTIONS:** When using this departure, file the appropriate depicted fix and route. Aircraft landing Columbus (CMH) must file via SCORR. Aircraft filed over APE must file via SCORR. Aircraft landing Cleveland (CLE) must file via MAARS. Departures at/above 10000, maintain 280K until advised by ATC.

(NARRATIVE ON FOLLOWING PAGE)

NOTE: Chart not to scale.