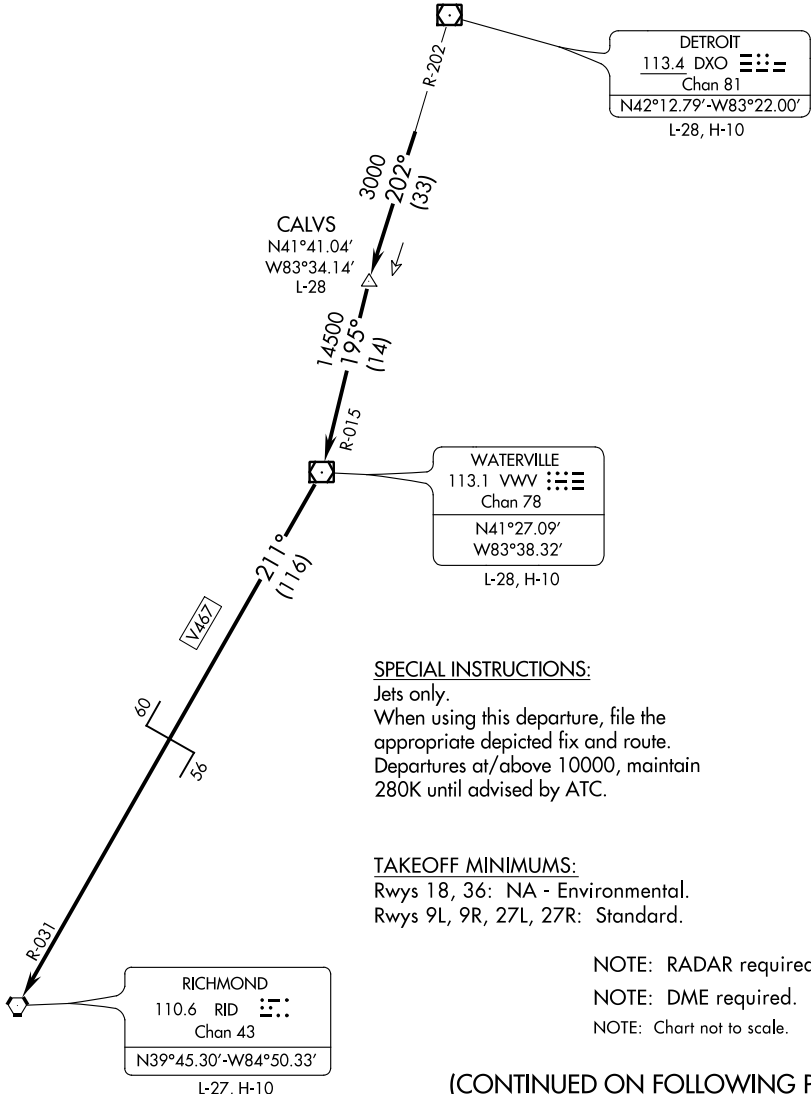


RICHMOND EIGHT DEPARTURE

ATIS 125.025
CLNC DEL 118.25
GND CON 121.9
PONTIAC TOWER ★
120.5 (CTAF)

**TOP ALTITUDE:
3000**



SPECIAL INSTRUCTIONS:

Jets only.
When using this departure, file the appropriate depicted fix and route.
Departures at/above 10000, maintain 280K until advised by ATC.

TAKEOFF MINIMUMS:

Rwys 18, 36: NA - Environmental.
Rwys 9L, 9R, 27L, 27R: Standard.

- NOTE: RADAR required.
- NOTE: DME required.
- NOTE: Chart not to scale.

(CONTINUED ON FOLLOWING PAGE)

RICHMOND EIGHT DEPARTURE

EC-1, 04 JAN 2018 to 01 FEB 2018

EC-1, 04 JAN 2018 to 01 FEB 2018