

WAAS CH <b>70615</b> <b>W27A</b>	APP CRS <b>272°</b>	Rwy ldg TDZE Apt Elev	<b>6520</b> <b>974</b> <b>980</b>
--	------------------------	-----------------------------	---

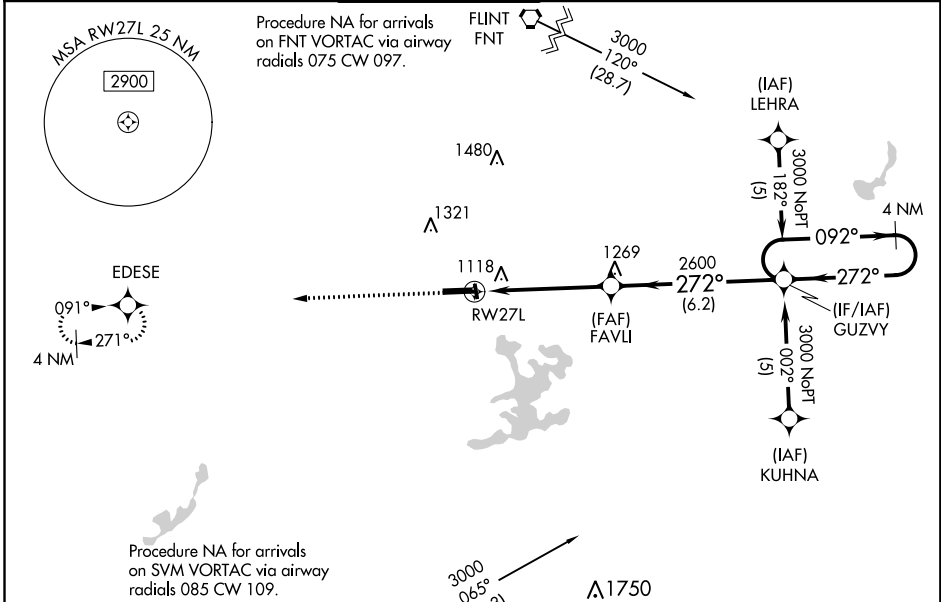
# RNAV (GPS) RWY 27L

OAKLAND COUNTY INTL (PTK)

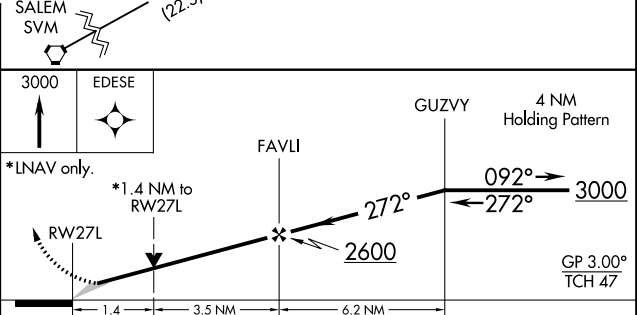
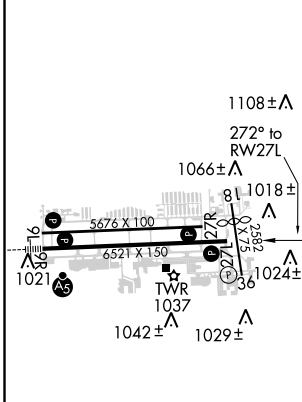
**⚠** For uncompensated Baro-VNAV systems, LNAV/VNAV NA below -16°C (4°F) or above 47°C (116°F).  
**⚠** DME/DME RNP-0.3 NA. When local altimeter setting not received, use Coleman A Young Muni altimeter setting and increase all DA 105 feet and all MDA 120 feet, increase LPV and LNAV/VNAV all Cats visibility ¼ mile, LNAV Cat C/D, and Circling Cat C/D visibility ½ mile. Baro-VNAV and VDP NA when using Coleman A Young Muni altimeter setting.

**MISSED APPROACH:**  
Climb to 3000 direct EDESE and hold.

ATIS <b>125.025</b>	DETROIT APP CON <b>127.5 363.2</b>	PONTIAC TOWER * <b>120.5 (CTAF) 0</b>	GND CON <b>121.9</b>	CLNC DEL <b>118.25</b>	UNICOM <b>122.95</b>
------------------------	---------------------------------------	--	-------------------------	---------------------------	-------------------------



ELEV 980	<b>D</b>	TDZE 974
----------	----------	----------



CATEGORY	A	B	C	D
LPV DA	1174-3/4 200 (200-3/4)			
LNAV/VNAV DA	1463-1 3/4 489 (500-1 3/4)			
LNAV MDA	1460-1	486 (500-1)	1460-1 1/4 486 (500-1 1/4)	1460-1 1/2 486 (500-1 1/2)
CIRCLING	1500-1 520 (600-1)	1520-1 540 (600-1)	1560-1 1/2 580 (600-1 1/2)	1640-2 660 (700-2)

- HIRL Rwy 9R-27L
- MIRL Rwy 9L-27R
- REIL Rwy 9L and 27R
- REIL Rwy 27L

EC-1, 04 JAN 2018 to 01 FEB 2018

EC-1, 04 JAN 2018 to 01 FEB 2018