

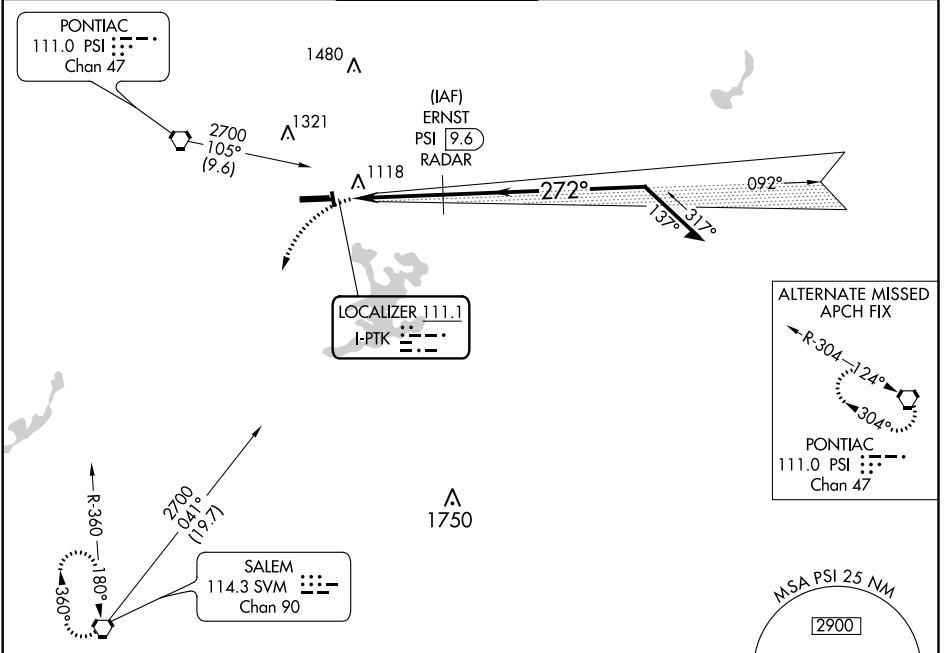
LOC I-PTK <b>111.1</b>	APP CRS <b>272°</b>	Rwy Idg <b>6520</b>
		TDZE <b>974</b>
		Apt Elev <b>980</b>

**LOC BC RWY 27L**  
OAKLAND COUNTY INTL (PTK)

**▼** When local altimeter setting not received, use Coleman A Young Muni altimeter setting and increase all MDA 120 feet, increase S-27L Cat C/D visibility ¼ mile and Circling Cat C/D visibility ½ mile.

**MISSED APPROACH:** Climbing left turn to 3000 direct SVM VORTAC and hold.

ATIS <b>125.025</b>	DETROIT APP CON <b>127.5 363.2</b>	PONTIAC TOWER * <b>120.5 (CTAF) 0</b>	GND CON <b>121.9</b>	CLNC DEL <b>118.25</b>	UNICOM <b>122.95</b>
------------------------	---------------------------------------	--	-------------------------	---------------------------	-------------------------

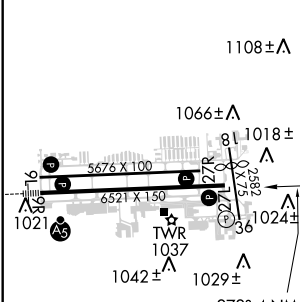


EC-1, 04 JAN 2018 to 01 FEB 2018

EC-1, 04 JAN 2018 to 01 FEB 2018

ELEV 980	<b>D</b>	TDZE 974
----------	----------	----------

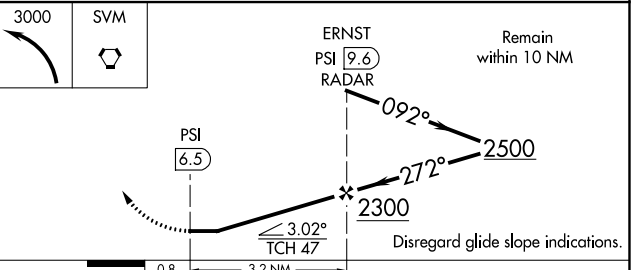
**BACK COURSE**  
DME or RADAR REQUIRED



HIRL Rwy 9R-27L **Ⓛ**  
MIRL Rwy 9L-27R **Ⓛ**  
REIL Rwys 9L and 27R **Ⓛ**  
REIL Rwy 27L **Ⓛ**

FAF to MAP 3.3 NM

Knots	60	90	120	150	180
Min:Sec	3:18	2:12	1:39	1:19	1:06



CATEGORY	A	B	C	D
S-27L	1420-1	446 (500-1)	1420-1¼ 446 (500-1¼)	1420-1½ 446 (500-1½)
CIRCLING	1500-1 520 (600-1)	1520-1 540 (600-1)	1560-1½ 580 (600-1½)	1640-2 660 (700-2)