


LOC I-PTK 111.1	APP CRS 092°	Rwy Idg 6520
		TDZE 980
		Apt Elev 980

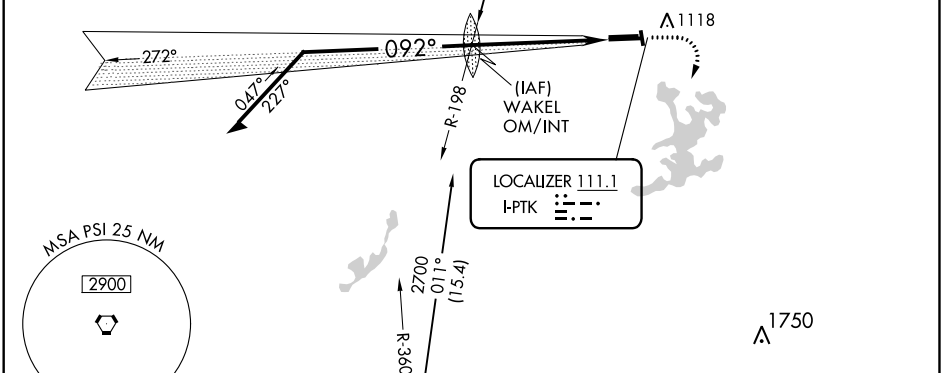
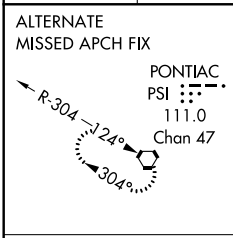
ILS or LOC RWY 9R

OAKLAND COUNTY INTL (PTK)

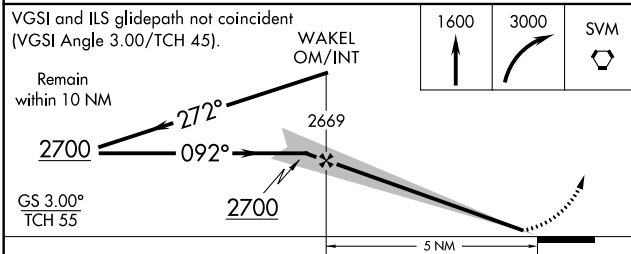
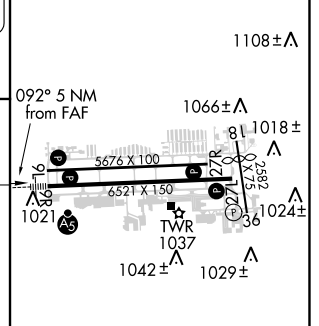
⚠ *RVR 1800 authorized with the use of FD or AP or HUD to DA.
⚠ When local altimeter setting not received, use Coleman A Young Muni altimeter setting and increase DA 105 feet and all MDA 120 feet, increase S-LOC 9R Cats C and D visibility ½ mile, circling Cat B visibility ¼ mile, Cats C and D visibility ½ mile.

MALSR

MISSED APPROACH: Climb to 1600, then climbing right turn to 3000 direct SVM VORTAC and hold.

ATIS 125.025	DETROIT APP CON 127.5 363.2	PONTIAC TOWER * 120.5 (CTAF) 0	GND CON 121.9	CLNC DEL 118.25	UNICOM 122.95
------------------------	---------------------------------------	--	-------------------------	---------------------------	-------------------------



ELEV 980	D	TDZE 980
----------	----------	----------



HIRL Rwy 9R-27L **0**

MIRL Rwy 9L-27R **0**

REIL Rwys 9L and 27R **0**

REIL Rwy 27L **0**

FAF to MAP 5 NM

Knots	60	90	120	150	180
Min:Sec	5:00	3:20	2:30	2:00	1:40

CATEGORY	A	B	C	D
S-ILS 9R		* 1180/24	200 (200-½)	
S-LOC 9R	1620/24	640 (700-½)	1620/60 640 (700-1¼)	1620-1½ 640 (700-1½)
CIRCLING	1620-1	640 (700-1)	1620-1¾ 640 (700-1¾)	1640-2 660 (700-2)

EC-1, 04 JAN 2018 to 01 FEB 2018

EC-1, 04 JAN 2018 to 01 FEB 2018