


VOR/DME BIE 110.6 Chan 43	APP CRS 345°	Rwy Idg 5602 TDZE 1307 Apt Elev 1324
---	------------------------	---

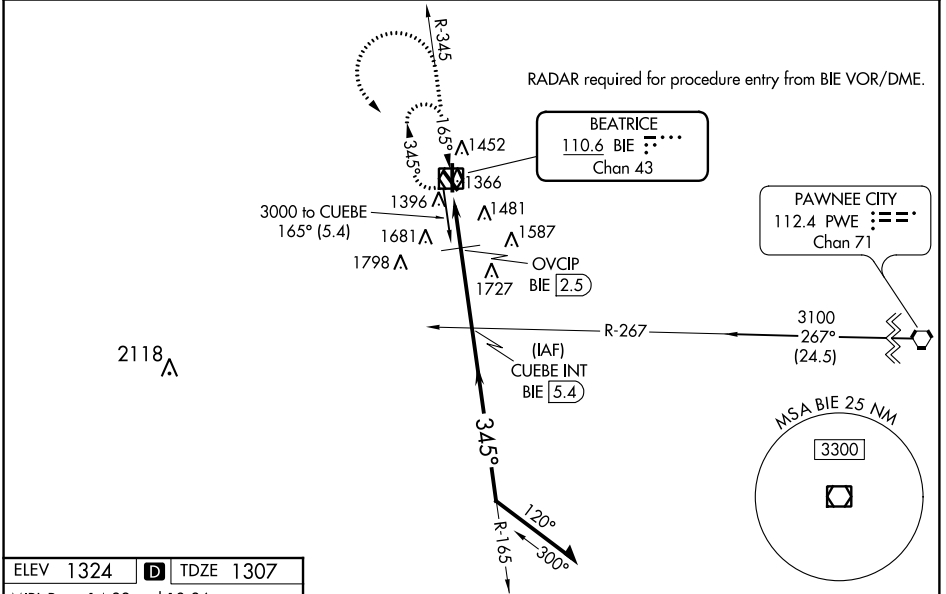
VOR RWY 36

BEATRICE MUNI (BIE)

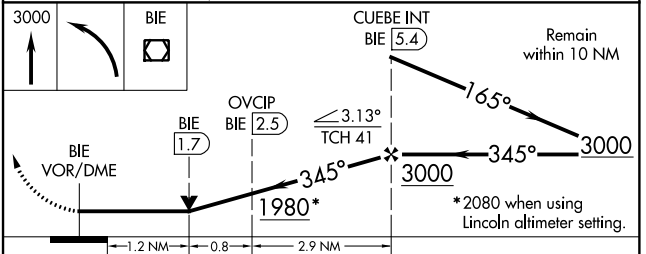
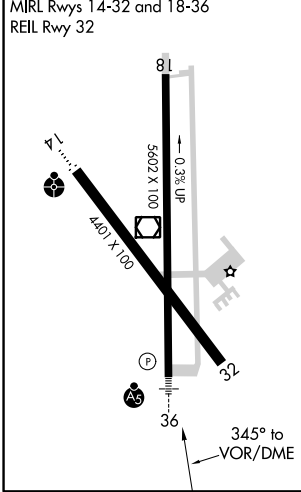
⚠ VDP NA with Lincoln altimeter setting. When local altimeter setting not received, use Lincoln altimeter setting and increase all MDA 100 feet. Increase S-36 Cats C/D visibility to 1½, Circling Cat B to 1¼, Cat C to 2½ and Cat D to 2¾. Increase OVCIP fix minimums S-36 Cats C/D visibility ¼ mile and Circling Cat D ½ mile. For inoperative MALS_R, increase S-36 Cats A/B visibility to 1 and Cats C/D visibility to 1⅞, increase OVCIP fix minimums S-36 Cats A/B visibility to 1. For inoperative MALS_R when using Lincoln altimeter setting, increase S-36 Cat A visibility to 1 and Cats C/D to 2½. Increase OVCIP fix minimums Cats A/B visibility to 1 and Cats C/D visibility to 1½.

MALS_R

MISSED APPROACH:
 Climb to 3000 then left turn direct BIE VOR/DME and hold.

AWOS-3 125.325	MINNEAPOLIS CENTER 126.4 317.7	COLUMBUS RADIO 122.5	UNICOM 122.8 (CTAF) 0
--------------------------	--	--------------------------------	---------------------------------



ELEV 1324	D	TDZE 1307
-----------	----------	-----------



CATEGORY	A	B	C	D
S-36	1980-¾ 673 (700-¾)		1980-1½ 673 (700-1½)	
CIRCLING	1980-1 656 (700-1)		1980-1⅞ 656 (700-1⅞)	2060-2¼ 736 (800-2¼)
OVCIP FIX MINIMUMS				
S-36	1740-¾ 433 (500-¾)			
CIRCLING	1820-1 496 (500-1)	1820-1½ 496 (500-1½)	2060-2¼ 736 (800-2¼)	

NC-2, 04 JAN 2018 to 01 FEB 2018

NC-2, 04 JAN 2018 to 01 FEB 2018